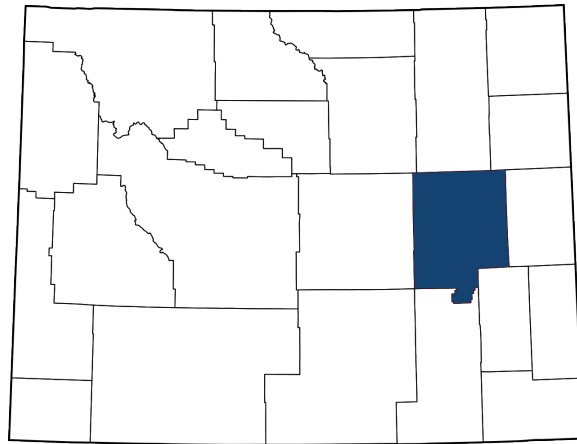


# A Converse County Profile: Socioeconomics



## **Converse County Board of County Commissioners**

Rick Grant, Chair

Robert Short

Mike Colling

Tony Lehner

Jim Willox

The goal of this document is to provide an accurate picture of Converse County's socioeconomic attributes. Accomplishing this requires verifiable and universally accepted substantive data that is objectively incorporated into a narrative format.

Those requirements provide the foundation for this document. The resulting document not only serves the county as it moves forward with its own educational and planning efforts, but also serves to inform state and federal educational and planning efforts as well.

*This socioeconomic profile of Converse County is made possible  
with the collaborative support of:*



UNIVERSITY  
OF WYOMING  
EXTENSION



Wyoming County  
Commissioners  
Association

# INTRODUCTION

In a rapidly changing world, timely and accurate information is essential to good decision making. Local officials, state government, federal agencies, and the general public need information on the structure and trends within a region's economy in order to more effectively conduct and participate in public policy decision making processes. Information describing regional economic conditions can aid in the public policy decision making process by providing a perspective on economic structure and changes over time. In addition, the identification of long-term trends can help residents, local official, state government, and federal agencies plan for the future. This report has been developed to provide baseline information on the structure and trends of the Converse County economy.

Four types of information are discussed in this report, including: 1) Demographics, 2) Land Characteristics, 3) County Government Finances, and 4) Natural Resource Based Industry Profiles. The Demographic section provides information on the characteristics of the residents of county. The Land Characteristics section provides a perspective on the physical setting of the county. The County Government Finances section considers county government's ability to meet the needs of residents in terms of public services and public infrastructure. The Industry profile section discusses the economic importance of natural resource based industries in the county.

Each type of information is discussed separately in the report. To put Converse County's information in perspective, the county data is compared to corresponding data for Wyoming and the United States. A variety of data sources were used to develop this socio-economic profile including the Wyoming Department of Administration & Information – Economic Analysis Division's Wyoming County Profiles. The most current data available from these data sources was used in the report. All time series data involving dollars were adjusted for inflation to 2009 dollars since these deflators are latest that are currently available. This report is part of an ongoing cooperative effort between the University of Wyoming, the Wyoming County Commissioners Association, and the Wyoming Department of Administration and Information to develop a socio-economic database for Wyoming Counties.

# **COUNTY SUMMARY**

## Demographics

Population growth is an important indicator of the vitality of a county's economy. Overall, Converse County experienced positive population growth between 2005 and 2015, increasing from 12,595 residents in 2005 to 14,312 in 2015 (+14 percent). The county's population growth rate was comparable to Wyoming's (+14 percent) and higher than the U.S.'s (+9 percent) during this time period. Up until 2015, the county had experienced fairly steady population growth. However, since 2015 the county's population has decreased by 503 residents through 2017 (-3.5 percent). This decrease is probably a reflection of the decline in the county's energy industry in recent years. While Wyoming also experienced a decrease in population since 2015, the decline was relatively smaller. On the other hand, the U.S. population has continued to increase since 2015.

Population increases can occur in one of two ways: 1) Natural Increase (more births than deaths) or 2) Net In-Migration (more people moving in than moving out). Between 2005 and 2017 Converse County experienced population growth due to both positive Natural Increase and positive Net In-Migration. In terms of Natural Increase, the county's population growth rate was comparable to the Wyoming rate (8 percent vs. 8 percent). In terms of Net In-Migration, the county had a somewhat lower population growth rate (2 percent vs. 5 percent). The lower growth rate from Net In-Migration for the county reflects the net out-migration of 693 residents between 2015 and 2017. This out-migration is probably a result of the decline in the county's energy industry in recent years.

Individuals move to an area for a variety of reasons ranging from economic to aesthetic. Data from the Wyoming Housing Database Partnership for 2010 through 2017 indicates that the most frequent reason given by new residents to Converse County for moving to Wyoming were job related factors (55 percent). Job related factors included Job Transfers, New Jobs, Better Employment Opportunities, and Starting or Expanding a Business. The second most frequent reason was to be closer to friends and relatives who lived in the area (28 percent). The third most frequent reason was some other factor (11 percent). About 7 percent of new residents surveyed indicated that a better quality of life was the primary reason for moving to the county. This data is from the Housing Needs Assessment Survey conducted by the Wyoming Housing Database Partnership in cooperation with the Wyoming Department of Transportation. The survey results are based on a random sample of new residents who were exchanging their previous state's driver's licenses for a Wyoming driver's license.

In 2016, the largest age groups for Converse County residents were adults 45 to 64 years old (27 percent) and adults 25 to 44 years old (25 percent). Combined, these two age groups represented more than one-half of the total county population. The next largest age group was youth 5 to 17 (18 percent), followed by adult 65 years and over (15 percent), youth under 5 (8 percent), and young adults 18 to 24 (7 percent). The population distribution for the county was over represented at the lower end of the age spectrum relative to Wyoming and the U.S. Compared to Wyoming and the U.S., the county had a higher proportion of its overall population in the less than 5 age category and the 5 to 17 age category. In the young adult age categories, the county had a lower proportion of its overall population in the 18 to 24 and 25 to 44 age category. At the upper end of the age spectrum, the county had a higher proportion of

residents in the 45 to 64 age category and a comparable proportion in the 65 and over age category. The lower proportion of the county's population in the 18 to 24 and 25 to 44 age categories may indicate that the county has difficulty retaining and attracting young adults to live and work in the county. The higher proportion of county residents in the 45 to 64 age category suggests that the county may see an aging of its population as these residents become retirement age. The median age for the county in 2016 (38.5 years) was comparable to the median age for Wyoming (37.1 years) and the median age for the U.S. (37.9 years).

Like most of Wyoming, white is the predominate category of race in Converse County, accounting for 97 percent of the total population. The percentage of the population that is White in the county was somewhat higher than the percentage for Wyoming (94 percent) and substantially higher than the percentage for the U.S. (79 percent). The other five races identified by the federal government account for the remaining 3 percent with Two or More Races (1.4 percent) and Native American (0.9 percent) being the most common, followed by Black (0.6 percent), Asian (0.5 percent), and Pacific Islanders (0.0 percent). The proportion of the county's population that was Black, Asian, Pacific Islander, or Two or More races was lower than for either Wyoming or the U.S. The proportion of the county's population that was Native American (0.9 percent) was higher than the U.S. (0.7 percent) but lower than Wyoming (2.1 percent).

The federal government defines the term "Hispanic" as an ethnicity rather than a specific race. Thus, Hispanics can be individuals of any race that self-identify themselves as "Hispanic" or "Latino" based on heritage, nationality group, lineage, or country of birth of the person or person's parents or ancestors before their arrival in the United States. In Converse County, the percentage of the population classifying themselves as Hispanic (8 percent) was somewhat lower than the percentage for Wyoming (10 percent) and less than one-half the percentage for U.S. (18 percent).

Per capita income serves as a general indicator of the economic well-being of a county's population. In 2005, per capita income in Converse County was \$35,646 in 2009 dollars. This was 14 percent below Wyoming's per capita income (\$41,439) and 8 percent below the U.S. per capita income (\$38,916). From 2005 to 2015, after adjusting for inflation, per capita income for the county increased by 41 percent to \$50,299. As a result of this increase, in 2015 the county's per capita income was only 2 percent lower than the Wyoming average (\$51,380) and 14 percent above the U.S. average (\$44,478). In 2016, the county's per capita income declined to \$46,226 (-8 percent). There are three sources of per capita income: 1) net labor earnings including wages, salaries, and proprietor (self-employed) income, 2) government transfer payments such as Social Security, Medicare, Medicaid, and various income assistance program payments, and 3) investment income representing property income in the form of dividends, interest, and rents. The majority of the growth in the county's per capita income between 2005 and 2016 was the result of increased net labor earnings (52 percent) with 21 percent coming from increased transfer payments and 27 percent coming from increased investment income. Investment income was the fastest growing individual source of per capita income between 2005 and 2016 increasing by 46 percent, while transfer payments increased by nearly 46 percent and net labor earnings increased by 22 percent. In 2005, net labor earnings represented 69 percent of total per capita income,

with investment income representing 17 percent, and transfer payments representing 14 percent. In 2016, net labor income represented 65 percent of total per capita income, investment income represented 20 percent, and transfer payments represented 15 percent. The decrease in the proportion of per capita income from labor income was a result of the aging of the county's population. In 2005, 12 percent of the county's population was over 65; by 2016, 15 percent was over 65.

In 2016, per capita income for Converse County was \$51,182 in 2016 dollars. This level of income was 7 percent below the per capita income for Wyoming (\$55,116) and 4 percent above the per capita income for the U.S. (\$49,246). Among the three regions, the county had the highest per capita labor earnings (\$33,180) compared to Wyoming (\$30,875) and the U.S. (\$31,148). In 2016, the county had per capita transfer payments of \$7,944 which was somewhat higher than per capita transfer payments for Wyoming (\$7,356), and somewhat lower than per capita transfer payments for the U.S. (\$8,567). The county's per capita investment income (\$10,058) was 40 percent below per capita investment income for Wyoming (\$16,885), and 5 percent higher than per capita investment income for the U.S. (\$9,531).

The county's 2016 unemployment rate (6.2 percent) was higher than Wyoming's unemployment rate (5.3 percent) and higher than the U.S. unemployment rate (4.6 percent). While total per capita income for the county was 7 percent below the state average, the Wyoming Economic Analysis Division estimates that the county's cost-of-living for the second quarter of 2016 was 2 percent below the state average. This difference suggests that, on average, county residents were economically slightly worse-off than the rest of the state in 2016. However, the percent of the county's population that was below the poverty level (9.0 percent) was lower than the Wyoming's rate (10.9 percent) and significantly lower than the U.S. rate (14.0 percent).

Overall, the educational attainment of Converse County's population in terms of a high school degree or higher (90 percent) was slightly lower than Wyoming's (92 percent) and higher than the U.S. (87 percent). The county's population was less educated in terms of college bachelors or advanced degrees than Wyoming or the U.S. (15 percent vs. 26 percent vs. 30 percent). The percentage of the county population without a high school degree (10 percent) was higher than Wyoming's (8 percent) but lower than the U.S. (13 percent). The percentage of the county's population with just a high school degree (38 percent) was higher than Wyoming's (29 percent) and higher than the U.S. (27 percent). The percentage of the county's population with some college (24 percent) was lower than Wyoming's (26 percent) and higher than the U.S. (21 percent). The percentage of the county's population with an associate degree (13 percent) was higher than Wyoming (11 percent) and higher than the U.S. (8 percent). The percentage of the county's population with a bachelors (11 percent) was lower than Wyoming (17 percent) and the lower than the U.S. (19 percent). The percentage of the county's population with a graduate or professional degree (4 percent) was substantially below both Wyoming (9 percent) and the U.S. (11 percent).

In terms of access to educational resources, the county has two public school districts with a total of 15 schools and a 2016 fall enrollment of 2,413. The graduation rate for the school county's districts was 87 percent compared to 80 percent for the state average. The public school system had 223 certified

teachers, 35 certified staff, 26 administrators, and 209 classified staff. Total general fund expenditures for the county's public school system was \$40.3 million in 2016 with an operating cost of \$19,397 per average daily membership. This compares with an average operating cost of \$17,989 for the state.

Overall, Converse County experienced substantial employment growth between 2005 and 2016. Total employment in the county increased by 23 percent from 2005 through 2016 growing going from 7,159 jobs in 2005 to 8,811 jobs in 2016. During this time period, Wyoming employment increased by 12 percent and the U.S. employment increased by 12 percent. Much of the county's employment growth occurred between 2011 and 2014 when employment increased by 16 percent (+1,344 jobs). However, county employment decreased by 8 percent (-785 jobs) between 2014 and 2016. These changes in employment are probably related to fluctuations in energy development in the county. Wyoming experienced a similar decline in employment between 2014 and 2016, but the decline was proportionately much smaller. While county employment increased by 16 percent between 2011 and 2014, the county population increased by only 3 percent during this time period suggesting that most of the new jobs created between 2011 and 2014 did not employ county residents.

Mining (17 percent) and Local Government (16 percent), which includes the county's public school districts, were by far the largest sources of employment in Converse County. Combined these two sectors represented one-third of total county employment. Following these two sectors were Retail Trade, Agriculture, Construction, Accommodation & Food Service, and Transportation & Warehousing, all with more than 5 percent of total county employment. Combined these seven sectors represented about two-thirds of the employment in the county.

Location quotients (LQ) were used to identify Defining Industries in the county. A location quotient is the ratio of an industry's share of total employment in the region relative to the industry's share of total employment at the national level. A large location quotient is an indication of specialization within the county's economy. Defining Industries are important because they play a significant role in a region's growth over time. The Federal Reserve Bank of Kansas City considers Defining Industries as those with a locational quotient of at least 1.25 that account for at least 0.2 percent of total employment in the region. Based on this definition, Converse County has six Defining Industries including: Mining (23.28), Utilities (8.79), Agriculture (4.42), Forestry, Fishing, & Ag Support (2.54), Local Government (2.19) and Transportation & Warehousing (2.19). These six sectors are relatively more important in the county's economy than they are at the national level.

Employment in Converse County increased by 34 percent from 2005 through 2014. The largest increases in employment came from Mining (+1,500 jobs), Local Government (+265 jobs) and Construction (+256 jobs). During this time period, only two sectors lost employment, Retail Trade (-43) and Information (-24). However, employment in the county declined by 8 percent between 2014 and 2016. During this time period, 14 sectors lost employment with Mining (-362), Construction (-327), and Accommodations & Food Services (-106) suffering the largest losses.



In addition to the number of jobs, the labor earnings associated with those jobs is an important consideration. Overall average earnings per job are a general measure of the economic well-being of the local workforce. In 2005, the average earnings per job for the county was \$35,646, in 2009 dollars, which was 14 percent below the Wyoming average earnings per job (\$41,439) and 8 percent below the U.S. average earnings per job (\$38,916). From 2005 through 2016, after adjusting for inflation, county average earnings per job increased by 30 percent to \$46,226. As a result of this increase, 2016 county average earnings per job were only 7 percent below the Wyoming average earnings per job (\$49,779) and 4 percent above the U.S. average earnings per job (\$44,478). While total per capita income for the county was 7 percent below the state average, the Wyoming Economic Analysis Division estimates that the county's cost-of-living for the second quarter of 2016 was 2 percent below the state average. This difference suggests that, on average, the county workforce was economically slightly worse-off than the rest of the state in 2016. Due to declines in the county's energy sector, average earnings per job declined by 8 percent from 2015 to 2016 (\$50,298 to \$46,226).

Average earnings per job (AEPJ), which includes employer paid benefits, varies substantially by sector. In 2016, AEPJ in Converse County ranged from over \$121,000 for the Utilities sector to a negative \$414 for agriculture. After Utilities, the next highest AEPJ was Transportation & Warehousing (\$87,288), Federal-Civilian (\$82,478), and State Government (\$81,090). Of the 23 sectors in the county's economy, 7 had AEPJ greater or comparable to the Wyoming average (\$55,116). The 7 sectors with AEPJ greater than or comparable to the Wyoming average represented only 57 percent of the total employment in the county resulting in the overall lower AEPJ for the county. The negative average earnings per job for the county's agriculture sector are a reflection of the variability in agriculture income with 2016 being a down year for the county's agriculture.

The combination of the number of jobs and the average earnings per job determines the relative importance of individual sectors in terms of total labor earnings in the Converse County economy. Labor earnings are important because they represent the major source of personal income for county residents. Overall county employment generated \$484.8 million in labor earnings in 2016. Mining (24 percent) and Local Government (21 percent) were the largest source of labor earnings for the county. Combined these two sectors represented 45 percent of total county labor earnings.

### **Land Characterisitcs**

Converse County contains 2.7 million acres of land. Private land is the largest category of landownership in the county, accounting for 76 percent of the land area (2.1 million acres). Federal land represents 14 percent of the land area (389,440 acres). Of this total, the BLM manages 33 percent (130,048 acres) and the Forest Service manages 67 percent (259,264 acres). State land represents 10 percent of the county's land area (260,672 acres), with almost all this land being state trust land. Local government owns less than one percent of the county's land area (1,152 acres) with 78 percent owned by the city (896 acres), 11 percent owned by the school districts (128 acres), and 11 percent owned by the county (128 acres). Information from the Wyoming Department of Revenue on acres taxed as agricultural land indicates that 92 percent of the private land in the county is in agricultural use (1.9 million acres). Of this total, 97

percent is classified as range land (1.8 million acres), 2 percent is classified as irrigated crop land (42,588 acres) and less than one percent is classified as dry crop land (6,026 acres).

Federal lands are managed for different purposes under differing statutory authority. Three possible categories of designation include: 1) Protected, 2) Restricted., and 3) General Use.

- Protected Areas include National Parks and Preserves (NPS), Wilderness (NPS, FWS, FS, BLM), National Conservation Areas (BLM), National Monuments (NPS, FS, BLM), National Recreation Areas (NPS, FS, BLM), National Wild and Scenic Rivers (NPS, FS, BLM), Water Fowl Protection Areas (FWS), Wildlife Management Areas (FWS), Research Natural Areas (FS, BLM), Areas of Critical Environmental Concern (BLM), and National Wildlife Refuges (FWS).
- Restricted Areas include Wilderness Study Areas (NPS, FWS, FS, BLM) and Inventoried Roadless Areas (FS).
- General Use Areas include Public Domain Lands (BLM) and National Forests and Grasslands (FS).

This data was obtained from the Economic Profile System – Human Dimension Toolkit (NPS = National Park Service, FWS = Fish and Wildlife, FS = Forest Service, and BLM = Bureau of Land Management).

In Converse County, Economic Profile System data indicates that 78 percent of Federal lands in the county are designated for general use, with 22 percent designated for restricted use, and no Federal lands designated for protected use. In comparison, 21 percent of total Federal lands in Wyoming are classified as protected, 13 percent are classified as restricted and 66 percent are classified as general use.

### **County Government Finances**

Wyoming Department of Audit information indicates that the total revenue for Converse County Government, excluding the airport and the hospital, was \$35.0 million in FY2017. Of this total, the largest sources were Taxes which included property taxes and any optional sales tax revenue (62 percent), Other Local Government Revenue (17 percent) and State Aid, which included the county's share of the 4 percent sales and use tax revenue (15 percent). Combined these three sources represented 95 percent of the total county government revenue in FY2017. Following these three revenue sources were Direct Federal Aid (3 percent), Charges for Services (1 percent), and Miscellaneous Revenue (less than 1 percent). Combined these revenue sources represented 5 percent of the total county government revenue in FY2017. Per capita revenue for the county in FY2017 was \$2,532, which was two times the state average (\$1,254).

From FY2013 to FY 2015, county government revenue nearly doubled from \$23.9 million to \$46.3 million. However, between FY2015 and FY2017 county government revenue declined from \$46.3 million to \$35.0 million (-25 percent). This variability is probably a reflection of the changes in the level of activity in the county's energy industry.

The total assessed valuation for Converse County in 2017 was \$1.1 billion. Fifty-five percent of the total valuation was from Minerals. Following Minerals was Utilities (19 percent), Industrial Property (12 percent), Residential Property (9 percent), Commercial Property (3 percent), and Industrial Agricultural Lands (2 percent). The county's per capita assessed valuation (\$80,401) was 2.5 times greater than Wyoming's per capita assessed valuation (\$32,495). Out of Wyoming's 23 counties, Converse County ranked 7<sup>th</sup> in terms of total assessed valuation trailing only Campbell, Sweetwater, Sublette, Teton, Laramie, and Natrona.

In terms of Mineral Production, crude oil represented 64 percent of total county mineral assessed valuation, coal represented 26 percent, natural gas represented 8 percent, uranium represented 1 percent, sand & gravel represented less than one percent, and leonardite also represented less than one percent.

From 2013 to 2015, the county's assessed valuation increased from \$1.2 billion to \$1.8 billion (+57 percent). Eighty-nine percent of this increase was due to increases in mineral assessed valuation. However, from 2015 to 2017, the county's assessed valuation decreased from \$1.8 billion to \$1.1 billion (-39 percent). During this time period, the decrease in mineral assessed valuation exceeded the decrease in total assessed valuation.

In FY2017, Converse County's 5 percent sales and use tax generated \$30.7 million in tax revenue. Of this total, 56 percent (\$17.2 million) was retained by state government and 44 percent (\$13.5 million) was returned to local governments in the county. In FY2017, county government's share of the returned sales and use tax revenue was approximately \$4.7 million (35 percent) with the remaining \$8.8 million (65 percent) going to municipal governments in the county. Thirty percent of the county's total sales and use tax revenue came from Mining. Following Mining was Retail Sales (25 percent) and Wholesale Trade (10 percent). Combined, these three sectors contributed 65 percent of the county's total sales and use tax revenue. Public Administration, Other Services, Manufacturing, Utilities, Leisure & Hospitality, Financial Services, and Other, combined, contributed the remaining 35 percent of total county sales and use tax revenue. Public Administration represents sales and use tax revenue on motor vehicle purchases which are collected at the time of registration in Wyoming. The county's per capita sales & use tax revenue (\$2,220) was 63 percent higher than Wyoming's per capita sales & tax revenue (\$1,364).

At a 4 percent sales and use tax rate, county sales & use tax revenues increased from \$47.6 million in FY2013 to \$64.4 million in FY2015. Fifty-nine percent of this increase came from increased sales & use tax revenue from mining. However, county 4 percent sales & use tax revenue decreased from \$64.4 million to \$24.4 million (-62 percent) from FY2015 to FY2017. Fifty-nine percent of this decrease came from decreased sales & use tax revenue from mining.

The Economic Profile System-Human Dimensions Toolkit indicates that federal land payments to local governments in Converse County totaled \$1.2 million in FY2015. The largest source of federal land payments to the county was Payment in Lieu of Taxes (PILT) representing 58 percent of the total amount (\$696,834). PILT payments are intended to compensate county governments for non-taxable federal

lands within their borders. It is based on a maximum per-acre payment reduced by other federal revenue sharing payments and are subject to a per capita population cap. The second largest source of federal payments to the county was Forest Service Payments representing 34 percent of the total amount (\$401,836). Forest Service payments can include 25 Percent Revenue Sharing funds, Secure Rural School & Community Self Determination Act funds, and Bankhead-Jones Forest Grasslands funds. The third source of federal payments to the county was BLM payments representing 8 percent of the total amount (\$95,809). BLM payments represent revenue sharing funds including grazing fees through the Taylor Grazing Act. Of the \$1.2 million in Federal land payments to the county in FY2015, 64 percent went to county government (\$763,283), 1 percent went to local school districts (\$16,213), 4 percent (\$45,572) to grazing districts, and 31 percent went to other (\$369,411). In FY2015, Federal Land Payments to the county represented \$1.72 per eligible acre of Federal land. The average for Wyoming was \$0.92 per eligible acre of Federal land.

With increased energy development in the county, Converse County government costs, excluding the airport and the hospital, more than doubled between FY2014 and FY2016 increasing by \$21.7 million. Eighty-nine percent of this increase was in Construction expenditures. The county also saw substantial increases in Fire, County Sheriff, Courthouse, Jail, and Welfare expenses. With the recent decline in energy activity in the county, county government costs decreased by 10 percent (-\$4.2 million) between FY2016 and FY2017. Fifty-six percent of this decrease was in Construction expenditures. The county also saw substantial decreases in Fire, Road & Bridge, Capital, Courthouse, County Sheriff, and Welfare expenditures. In FY2014 and FY2015, county non-enterprise revenues exceeded county non-enterprise costs by \$8.2 million and \$16.8 million, respectively. However, in FY2016 and FY 2017, county non-enterprise cost exceeded county per capita revenues by \$7.4 million and \$2.7 million respectively.

### **Natural Resource Based Industry Profiles**

In 2016, the Mining sector in Converse County produced 11.4 million barrels of oil and 38.9 bcf of natural gas, 16.3 million tons of coal, 629,301 pounds of uranium, 1.1 tons of sand and gravel, and 23,840 pounds of leonardite. The mining production in the county had an assessed valuation of \$616.4 million dollars in 2017 (2017 assessed valuation for mineral production is based on 2016 production). This valuation represented 55 percent of the total assessed valuation for the county. Based on the county mill levy, the mineral industry generated \$36.5 million in property tax revenue in 2017. Of this total, 76 percent went to K-12 schools (\$27.7 million), 20 percent went to county government (\$7.4 million), and 4 percent went to county special districts (\$1.4 million). Special districts in the county included: Hospital, Cemetery, Solid Waste Disposal, and Conservation. In 2016, the mining industry in the county supported 1,500 jobs with labor earnings of \$115.7 million. This represented 17 percent of total employment and 24 percent of total labor earnings in the county. The percent of total employment in mining for the county was over 23 times the national percentage (0.7 percent) indicating that Mining was an area of specialization within the county's economy. The average earnings per job for mining in the county were \$77,163, which was 42 percent above the county average (\$55,020). The mining industry ranked 1<sup>st</sup> out of 23 sectors in the county's economy in terms of total employment and 1<sup>st</sup> out of 23 sectors in terms of total labor earnings.

In 2012, there were 410 agricultural operations in Converse County. These operations managed 2.4 million acres in the county. Included in this acreage is 92 percent of the private land in the county. Of the total land in agriculture, 96 percent is classified as grazing land, 2 percent as cropland, less than 1 percent as woodlands, and 1 percent as farmsteads and buildings. The average size of an agricultural operation in the county was 5,969 acres. The total cattle and sheep inventory in the county was 113,755 head including 59,177 head of cattle and calves and 54,578 head of sheep and lambs. In 2014, the county ranked 11<sup>th</sup> out of 23 counties in Wyoming in terms all cattle and 1<sup>st</sup> out of 23 counties in terms of all sheep. It also ranked 9<sup>th</sup> in alfalfa hay production and 11<sup>th</sup> in other hay production. In terms of investment by agricultural operators, the estimated total market value of lands, buildings, and equipment for agriculture in the county was \$976.5 million. This total included \$925.1 million in land and buildings and \$51.4 million for equipment and machinery. The average investment per agricultural operation was \$2.4 million. In 2012, agricultural operations in the county paid \$2.0 million in property taxes.

The gross revenue for the agricultural industry in the county in 2015 was \$42.7 million. Of this total, 73 percent was from cash receipts for livestock, 11 percent was from cash receipts for crops, 14 percent was from miscellaneous sources, and 2 percent was from government payments. Total employment for agriculture in 2016 was 532 jobs with labor earnings of -\$220,000. This represented 6 percent of the total jobs in the county. The percent of total employment in agriculture for the county was more than 4 times the national percentage (1.4 percent) indicating that agriculture was an area of specialization within the county's economy. The negative labor earnings for agriculture in 2016 are an indication of the variability in agricultural income. For example, in 2014, county agriculture labor earnings were nearly \$5.3 million. Average earnings per job in agriculture also tend to be lower because the employment estimates include a large number of small part-time and lifestyle operations that generate limited labor earnings. Bureau of Labor Statistics (BLS) data may be a better indicator of average earnings per job for commercial agricultural employment in the county. For 2016, BLS data indicates that the average earnings per job for agricultural employment in the County were \$38,010. The county's agriculture industry ranked 4<sup>th</sup> out of 23 sectors in the county's economy in terms of total employment and 23<sup>rd</sup> out of 23 sectors in terms of total labor earnings.

In addition to jobs and income, agriculture also provides important natural resource amenities such as open space. Open space offers landscapes, lifestyles, and wildlife habitat that can have value to both residents and visitors. Open space is particularly important because it determines the character of the landscapes surrounding a community. Out of economic necessity, most agricultural operations in the county cover large areas of land; as a result, agriculture can contribute substantially to maintaining open spaces on private lands in a region. As noted above, 92 percent of the private land in county is in agricultural use. Due to the natural resource amenities associated with agricultural land, there is public support for the retention of lands in agriculture. For example, a recent survey sponsored by the Wyoming Stock Growers Association, the Wyoming Stock Growers Land Trust, the Nature Conservancy, and the University of Wyoming found that nearly 80 percent of Wyoming residents felt that they personally benefit from the presence of farms and ranches in Wyoming. In addition, 76 percent of respondents were concerned with the loss of family farms and ranches in the State. Other issues of

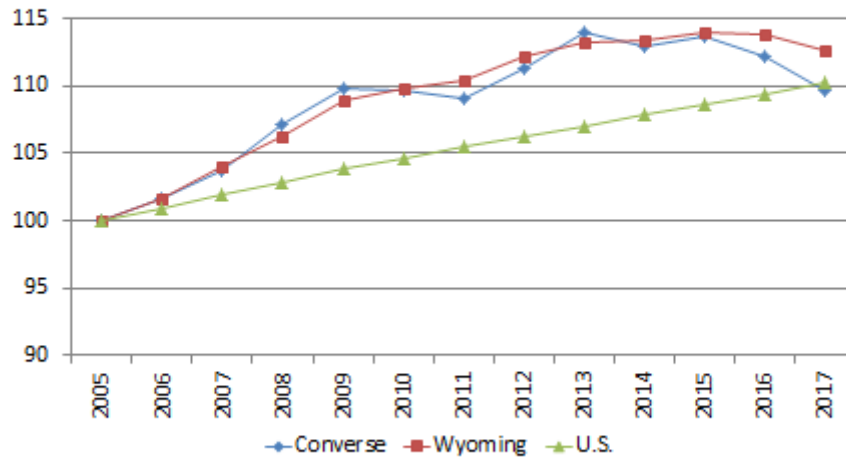
serious concern to respondents included the availability of water for farming and ranching (71 percent), and natural areas and ranchland being split up by new development (66 percent).

Dean Runyan Associates estimates that Converse County hosted 460,000 visitor nights in 2017. This compares to 505,000 nights in 2015 and 414,000 nights in 2016. The decrease between 2015 and 2016 may have been due to declines in the energy industry workforce in the county. Part of the increase from 2016 to 2017 may have been due to visitors traveling to see the solar eclipse. These visitors are estimated to have spent \$46.2 million during their stay in the county in 2017. In terms of accommodations, 34 percent of this spending was by visitors staying in hotels/motels, 48 percent by visitors staying in campgrounds, 12 percent was by visitors staying in private homes, 3 percent was by visitors staying in vacation homes, and 2 percent was by visitors not staying overnight. In terms of purchases, 18 percent was spent on accommodation, 25 percent was spent on food services, 10 percent was spent on food stores, 13 percent was spent on local transportation & gas, 19 percent was spent on arts, entertainment, and recreation, and 14 percent was spent on retail sales.

Dean Runyan estimated that the travel industry generated 550 direct jobs in the county in 2016. This represents 6 percent of total employment in the county. Fifty-one percent of these jobs were in the accommodations and food service sector, 25 percent were in the arts/entertainment/recreation sector, 20 percent were in the retail trade sector, and 4 percent were in the other travel sector. The labor earnings associated with this employment was estimated to be \$13.4 million. This represents 3 percent of the total labor earnings for the county. Average earnings per job for the travel industry in the county for 2017 were \$24,364. Average earnings per job for the travel industry were 44 percent of the county average (\$55,020). The tax revenue associated with the county's travel industry is estimated to be \$2.6 million with \$0.8 million (31 percent) going to local government and \$1.8 million (69 percent) going to state government.

# DEMOGRAPHICS

Figure 1.  
Population Growth Index: 2005-2017

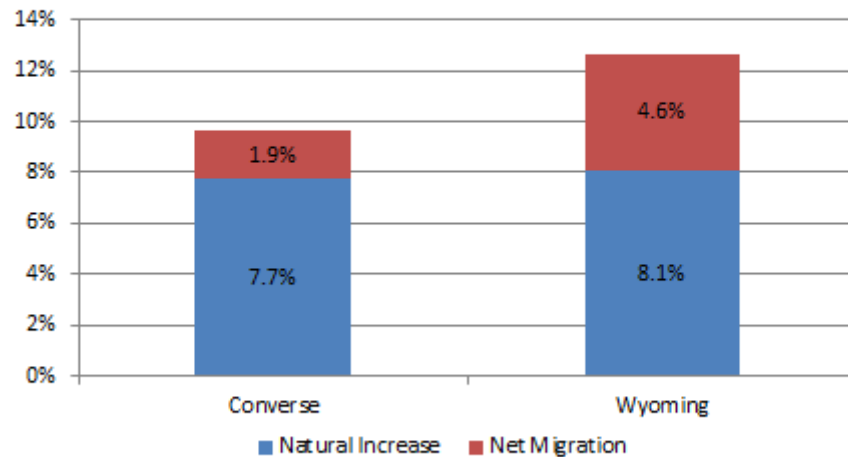


Population growth is an important indicator of the vitality of a county's economy. Overall, Converse County experienced positive population growth between 2005 and 2015, increasing from 12,595 residents in 2005 to 14,312 in 2015 (+14 percent). The county's population growth rate was comparable to Wyoming's (+14 percent) and higher than the U.S.'s (+9 percent) during this time period (Figure 1). Up until 2015, the county had experienced fairly steady population growth. However, since 2015, the county's population has decreased by 503 residents through 2017 (-3.5 percent). This decrease is probably a reflection of the decline in the county's energy industry in recent years. While Wyoming also experienced a decrease in population since 2015, the decline was relatively smaller. On the other hand, the U.S. population has continued to increase since 2015.

**Data Sources:** Wyoming Department of Administration and Information. 2018. Economic Analysis Division, Wyoming Population Estimates and Forecasts (<http://eativ.state.wy.us/pop/pop.html>).



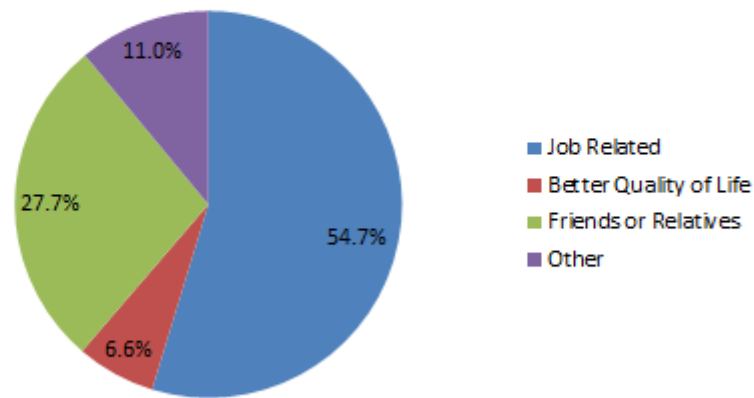
Figure 2.  
Comparison of Source of Population Change: 2005-2017



Population increases can occur in one of two ways: 1) Natural Increase (more births than deaths) or 2) Net In-Migration (more people moving in than moving out). Between 2005 and 2017, Converse County experienced population growth due to both positive Natural Increase and positive Net In-Migration (Figure 2). In terms of Natural Increase, the county's population growth rate was comparable to the Wyoming rate (8 percent vs. 8 percent). In terms of Net In-Migration, the county had a somewhat lower population growth rate (2 percent vs. 5 percent). The lower growth rate from Net In-Migration for the county reflects the net out-migration of 693 residents between 2015 and 2017. This out-migration is probably a result of the decline in the county's energy industry in recent years.

**Data Sources:** Wyoming Department of Administration and Information. 2018. Economic Analysis Division, Wyoming Population Estimates and Forecasts (<http://eadiv.state.wy.us/pop/pop.html>).

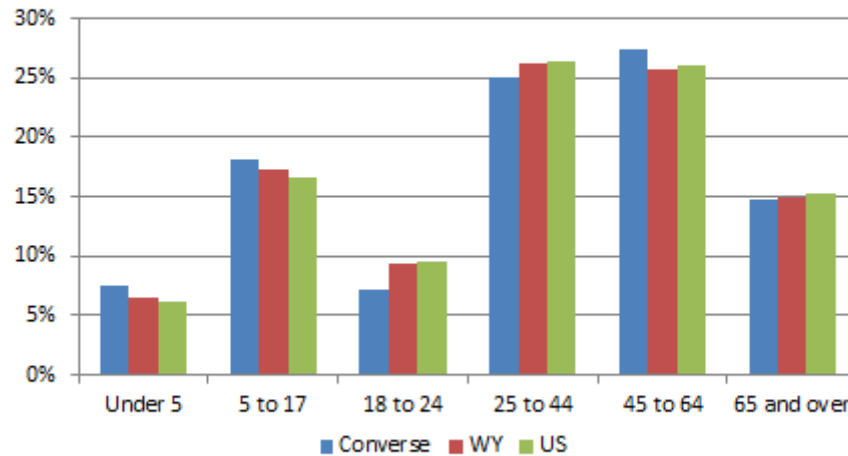
Figure 3.  
Primary Reason for Moving to Converse County: 2010-2017



Individuals move to an area for a variety of reasons ranging from economic to aesthetic. Data from the Wyoming Housing Database Partnership for 2010 through 2017 (Figure 3) indicates that the most frequent reason given by new residents to Converse County for moving to Wyoming were job related factors (55 percent). Job related factors included Job Transfers, New Jobs, Better Employment Opportunities, and Starting or Expanding a Business. The second most frequent reason was to be closer to friends and relatives who lived in the area (28 percent). The third most frequent reason was some other factor (11 percent). About 7 percent of new residents surveyed indicated that a better quality of life was the primary reason for moving to the county. This data is from the Housing Needs Assessment Survey conducted by the Wyoming Housing Database Partnership in cooperation with the Wyoming Department of Transportation. The survey results are based on a random sample of new residents who were exchanging their previous state's driver's licenses for a Wyoming driver's license.

**Data Source:** Wyoming Community Development Authority, Wyoming Housing Database Partnership (<https://www.wyomingcda.com/demographics/>).

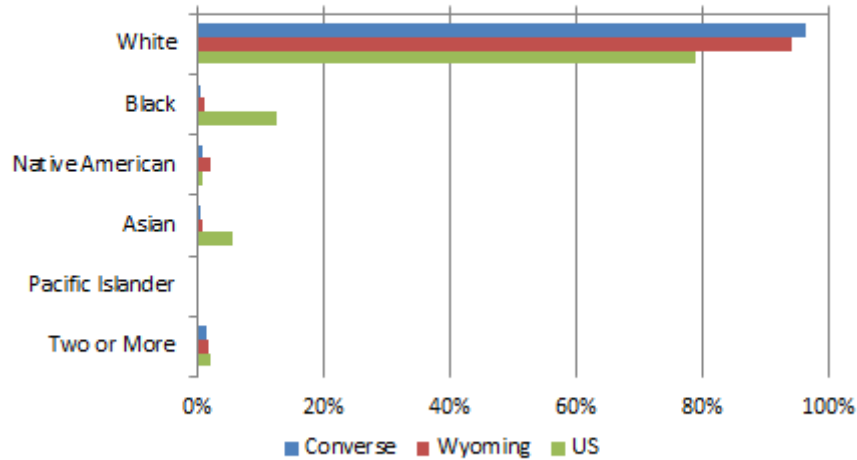
Figure 4.  
Comparison of Population Age Distribution: 2016



In 2016, the largest age groups for Converse County residents were adults 45 to 64 years old (27 percent) and adults 25 to 44 years old (25 percent). Combined, these two age groups represented more than one-half of the total county population (Figure 4). The next largest age group was youth 5 to 17 (18 percent), followed by adult 65 years and over (15 percent), youth under 5 (8 percent), and young adults 18 to 24 (7 percent). The population distribution for the county was over represented at the lower end of the age spectrum relative to Wyoming and the U.S. Compared to Wyoming and the U.S., the county had a higher proportion of its overall population in the less than 5 age category and the 5 to 17 age category. In the young adult age categories, the county had a lower proportion of its overall population in the 18 to 24 and 25 to 44 age category. At the upper end of the age spectrum, the county had a higher proportion of residents in the 45 to 64 age category and a comparable proportion in the 65 and over age category. The lower proportion of the county's population in the 18 to 24 and 25 to 44 age categories may indicate that the county has difficulty retaining and attracting young adults to live and work in the county. The higher proportion of county residents in the 45 to 64 age category suggests that the county may see an aging of its population as these residents become retirement age. The median age for the county in 2016 (38.5 years) was comparable to the median age for Wyoming (37.1 years) and the median age for the U.S. (37.9 years).

**Data Source:** Wyoming Department of Administration and Information. 2018. Economic Analysis Division, Wyoming Population Estimates and Forecasts (<http://eativ.state.wy.us/pop/pop.html>).

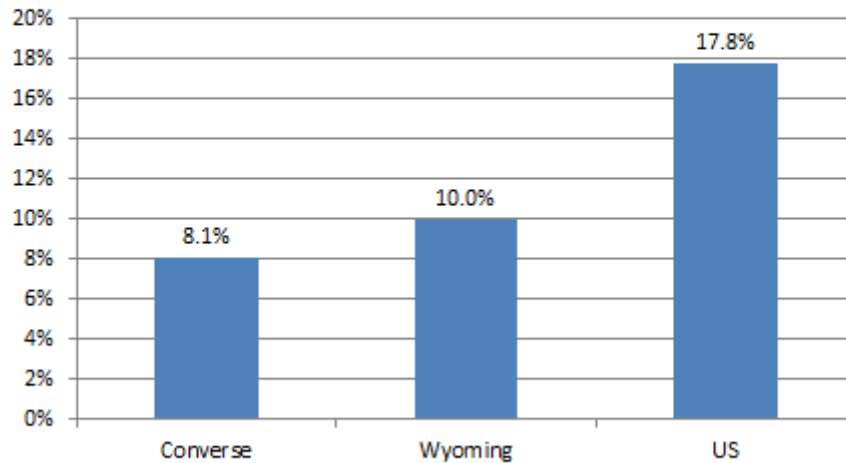
Figure 5.  
Comparison of Population by Race: 2016



Like most of Wyoming, white is the predominate category of race in Converse County, accounting for 97 percent of the total population (Figure 5). The percentage of the population that is White in the county was somewhat higher than the percentage for Wyoming (94 percent) and substantially higher than the percentage for the U.S. (79 percent). The other five races identified by the federal government account for the remaining 3 percent with Two or More Races (1.4 percent) and Native American (0.9 percent) being the most common, followed by Black (0.6 percent), Asian (0.5 percent), and Pacific Islanders (0.0 percent). The proportion of the county’s population that was Black, Asian, Pacific Islander, or Two or More races was lower than for either Wyoming or the U.S. The proportion of the county’s population that was Native American (0.9 percent) was higher than the U.S. (0.7 percent) but lower than Wyoming (2.1 percent).

**Data Source:** Wyoming Department of Administration and Information. 2018. Economic Analysis Division, Wyoming Population Estimates and Forecasts (<http://eadiv.state.wy.us/pop/pop.html>).

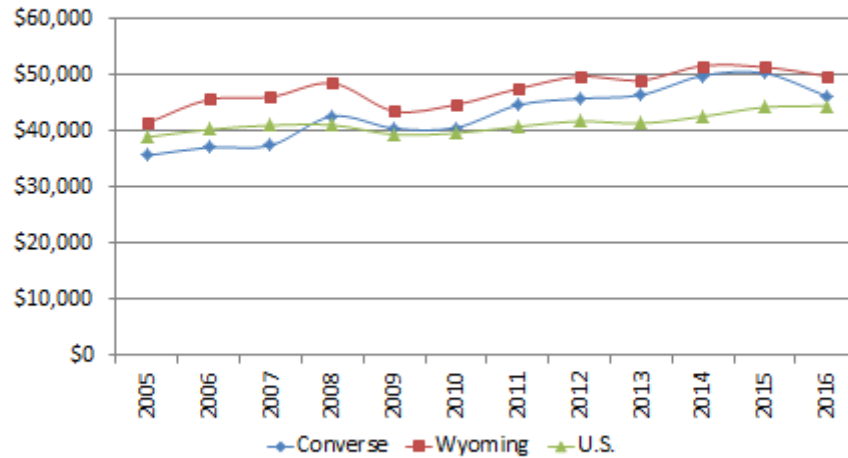
Figure 6.  
Comparison Percent of Population Hispanic: 2016



The federal government defines the term “Hispanic” as an ethnicity rather than a specific race. Thus Hispanics can be individuals of any race that self-identify themselves as “Hispanic” or “Latino” based on heritage, nationality group, lineage, or country of birth of the person or person’s parents or ancestors before their arrival in the United States. In Converse County, as shown in Figure 6, the percentage of the population classifying themselves as Hispanic (8 percent) was somewhat lower than the percentage for Wyoming (10 percent) and less than one-half the percentage for U.S. (18 percent).

**Data Source:** Wyoming Department of Administration and Information. 2018. Economic Analysis Division, Wyoming Population Estimates and Forecasts (<http://eativ.state.wy.us/pop/pop.html>).

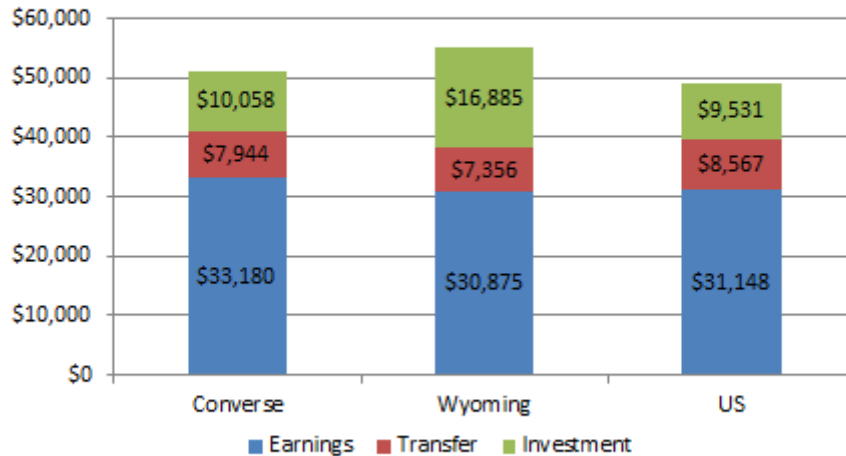
Figure 7.  
Per Capita Income: 2005-2016  
(Adjusted for Inflation)



Per capita income serves as a general indicator of the economic well-being of a county's population. In 2005, per capita income in Converse County was \$35,646 in 2009 dollars (Figure 7). This was 14 percent below Wyoming's per capita income (\$41,439) and 8 percent below the U.S. per capita income (\$38,916). From 2005 to 2015, after adjusting for inflation, per capita income for the county increased by 41 percent to \$50,299. As a result of this increase, in 2015 the county's per capita income was only 2 percent lower than the Wyoming average (\$51,380) and 14 percent above the U.S. average (\$44,478). In 2016, the county's per capita income declined to \$46,226 (-8 percent). There are three sources of per capita income: 1) net labor earnings including wages, salaries, and proprietor (self-employed) income, 2) government transfer payments such as Social Security, Medicare, Medicaid, and various income assistance program payments, and 3) investment income representing property income in the form of dividends, interest, and rents. The majority of the growth in the county's per capita income between 2005 and 2016 was the result increased net labor earnings (52 percent) with 21 percent coming from increased transfer payments and 27 percent coming from increased investment income. Investment income was the fastest growing individual source of per capita income between 2005 and 2016 increasing by 46 percent, while transfer payments increased by nearly 46 percent and net labor earnings increased by 22 percent. In 2005, net labor earnings represented 69 percent of total per capita income, with investment income representing 17 percent, and transfer payments representing 14 percent. In 2016, net labor income represented 65 percent of total per capita income, investment income represented 20 percent, and transfer payments represented 15 percent. The decrease in the proportion of per capita income from labor income was a result of the aging of the county's population. In 2005, 12 percent of the county's population was over 65; by 2016 15 percent was over 65.

**Data Source:** U.S. Department of Commerce. 2018. Bureau of Economic Analysis, Regional Economic Accounts, Local Area Personal Income & Employment, Table CA30.

**Figure 8.**  
**Comparison of Per Capita Income by Source 2016**

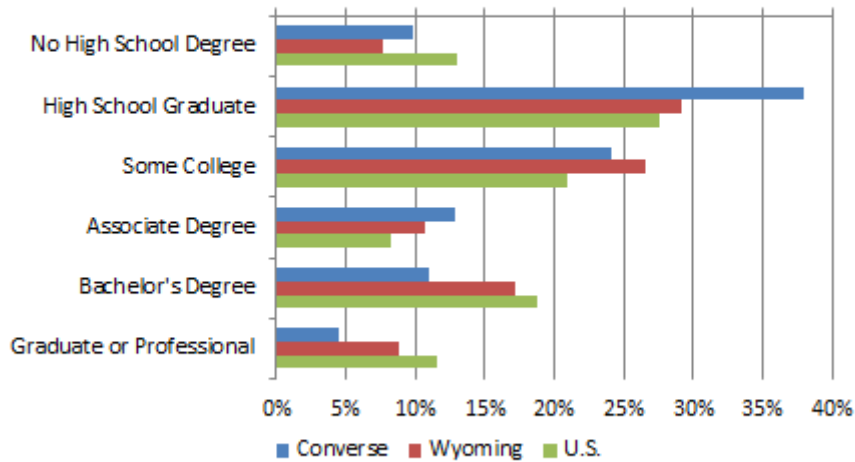


In 2016, per capita income for Converse County was \$51,182 in 2016 dollars (Figure 8). This level of income was 7 percent below the per capita income for Wyoming (\$55,116) and 4 percent above the per capita income for the U.S. (\$49,246). Among the three regions, the county had the highest per capita labor earnings (\$33,180) compared to Wyoming (\$30,875) and the U.S. (\$31,148). In 2016, the county had per capita transfer payments of \$7,944 which was somewhat higher than per capita transfer payments for Wyoming (\$7,356), and somewhat lower than per capita transfer payments for the U.S. (\$8,567). The county’s per capita investment income (\$10,058) was 40 percent below per capita investment income for Wyoming (\$16,885), and 5 percent higher than per capita investment income for the U.S. (\$9,531).

The county’s 2016 unemployment rate (6.2 percent) was higher than Wyoming’s unemployment rate (5.3 percent) and higher than the U.S. unemployment rate (4.6 percent). While total per capita income for the county was 7 percent below the state average, the Wyoming Economic Analysis Division estimates that the county’s cost-of-living for the second quarter of 2016 was 2 percent below the state average. This difference suggests that, on average, county residents were economically slightly worse-off than the rest of the state in 2016. However, the percent of the county’s population that was below the poverty level (9.0 percent) was lower than the Wyoming’s rate (10.9 percent) and significantly lower than the U.S. rate (14.0 percent).

**Data Source:** U.S. Department of Commerce. 2018. Bureau of Economic Analysis, Regional Economic Accounts, Local Area Personal Income & Employment, Table CA30.

**Figure 9.**  
**Level of Educational Attainment, 2012-2016**  
**(Population 25 Years or Older)**



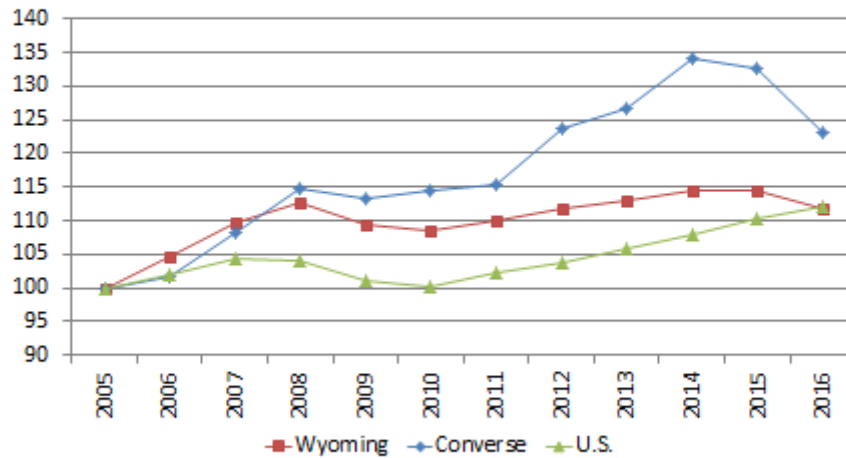
Overall, the educational attainment of Converse County’s population in terms of a high school degree or higher (90 percent) was slightly lower than Wyoming’s (92 percent) and higher than the U.S. (87 percent). The county’s population was less educated in terms of college bachelors or advanced degrees than Wyoming or the U.S. (15 percent vs. 26 percent vs. 30 percent). The percentage of the county population without a high school degree (10 percent) was higher than Wyoming’s (8 percent) but lower than the U.S. (13 percent). The percentage of the county’s population with just a high school degree (38 percent) was higher than Wyoming’s (29 percent) and higher than the U.S. (27 percent). The percentage of the county’s population with some college (24 percent) was lower than Wyoming’s (26 percent) and higher than the U.S. (21 percent). The percentage of the county’s population with an associate degree (13 percent) was higher than Wyoming (11 percent) and higher than the U.S. (8 percent). The percentage of the county’s population with a bachelors (11 percent) was lower than Wyoming (17 percent) and the lower than the U.S. (19 percent). The percentage of the county’s population with a graduate or professional degree (4 percent) was substantially below both Wyoming (9 percent) and the U.S. (11 percent).

In terms of access to educational resources, the county has two public school districts with a total of 15 schools and a 2016 fall enrollment of 2,413. The graduation rate for the school county’s districts was 87 percent compared to 80 percent for the state average. The public school system had 223 certified teachers, 35 certified staff, 26 administrators, and 209 classified staff. Total general fund expenditures for the county’s public school system was \$40.3 million in 2016 with an operating cost of \$19,397 per average daily membership. This compares with an average operating cost of \$17,989 for the state.

**Data Source:** Wyoming Department of Administration and Information. 2018. Economic Analysis Division, Wyoming County Profiles 2016.



Figure 10.  
Employment Growth Index: 2005-2016



Overall, Converse County experienced substantial employment growth between 2005 and 2016. Total employment in the county increased by 23 percent from 2005 through 2016 growing going from 7,159 jobs in 2005 to 8,811 jobs in 2016 (Figure 10). During this time period, Wyoming employment increased by 12 percent and the U.S. employment increased by 12 percent. Much of the county's employment growth occurred between 2011 and 2014 when employment increased by 16 percent (+1,344 jobs). However, county employment decreased by 8 percent (-785 jobs) between 2014 and 2016. These changes in employment are probably related to fluctuations in energy development in the county. Wyoming experienced a similar decline in employment between 2014 and 2016, but the decline was proportionately much smaller. While county employment increased by 16 percent between 2011 and 2014, the county population increased by only 3 percent during this time period suggesting that most of the new jobs created between 2011 and 2014 did not employ county residents.

**Data Source:** U.S. Department of Commerce. 2018. Bureau of Economic Analysis, Regional Economic Accounts, Local Area Personal Income & Employment, Table CA25.

**Figure 11.**

**Converse County Employment by Sector: 2016**

Sector	Jobs	Percent	LQ
Mining	1,500	17.0%	23.28
Local Government	1,420	16.1%	2.19
Retail Trade	654	7.4%	0.74
Agriculture	532	6.0%	4.42
Construction	524	5.9%	1.14
Accommodations & Food Service	503	5.7%	0.77
Transportation & Warehousing	468	5.3%	1.43
Real Estate, Rental, & Leasing	410	4.7%	1.00
Other Services	391	4.4%	0.75
Health Care & Social Assistance	378	4.3%	0.38
Professional Services	316	3.6%	0.51
Finance & Insurance	262	3.0%	0.58
Management Services	256	2.9%	0.39
Utilities	242	2.7%	8.79
Manufacturing	219	2.5%	0.37
State Government	145	1.6%	0.60
Wholesale Trade	129	1.5%	0.41
Arts, Entertainment, & Recreation	125	1.4%	0.64
Forestry, Fishing, & Ag Support	106	1.2%	2.54
Military	74	0.8%	0.84
Federal - Civilian	67	0.8%	0.52
Information	65	0.7%	0.43
Educational Services	25	0.3%	0.12
<b>Total</b>	<b>8,811</b>	<b>100.0%</b>	<b>N.A.</b>

Mining (17 percent) and Local Government (16 percent), which includes the county's public school districts, were by far the largest sources of employment in Converse County. Combined, these two sectors represented one-third of total county employment (Figure 11). Following these two sectors were Retail Trade, Agriculture, Construction, Accommodation & Food Service, and Transportation & Warehousing, all with more than 5 percent of total county employment. Combined these seven sectors represented about two-thirds of the employment in the county.

The location quotients (LQ), in the fourth column of Figure 11, were used to identify Defining Industries in the county. A location quotient is the ratio of an industry's share of total employment in the region relative to the industry's share of total employment at the national level. A large location quotient is an indication of specialization within the county's economy. Defining Industries are important because they play a significant role in a region's growth over time. The Federal Reserve Bank of Kansas City considers Defining Industries as those with a locational quotient of at least 1.25 that account for at least 0.2

percent of total employment in the region. Based on this definition Converse County has six Defining Industries including: Mining (23.28), Utilities (8.79), Agriculture (4.42), Forestry, Fishing, & Ag Support (2.54), Local Government (2.19) and Transportation & Warehousing (2.19). These six sectors are relatively more important in the county's economy than they are at the national level.

**Data Source:** U.S. Department of Commerce. 2018. Bureau of Economic Analysis, Regional Economic Accounts, Local Area Personal Income & Employment, Table CA25 and Woods & Poole Economics. 2018. 2018 State Profile: State and County Projections to 2050, Washington, D.C (numbers in italics).

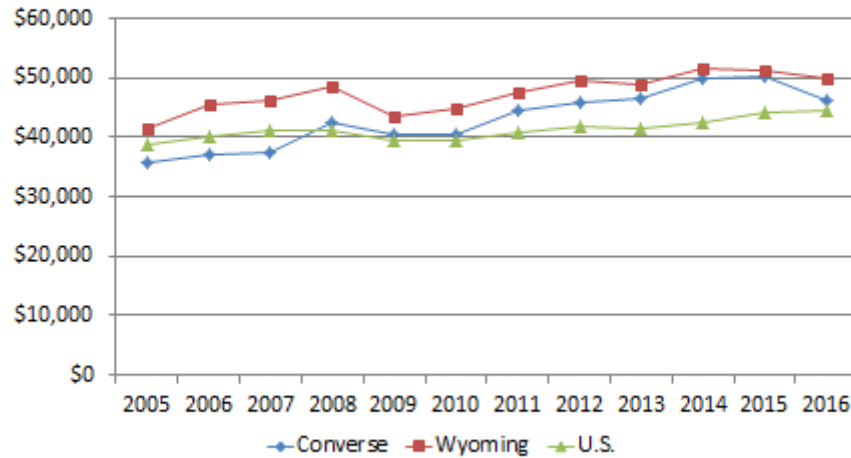
**Figure 12.****Change in Converse County Employment by Sector: 2005-2016**

Sector	2005	2014	2016	Change 2005-2014	Change 2014-2016
Mining	806	1,862	1,500	1,056	-362
Local Government	1,098	1,363	1,420	265	57
Construction	595	851	524	256	-327
Real Estate, Rental, & Leasing	241	412	410	171	-2
Professional Services	199	322	316	123	-6
Manufacturing	147	241	219	94	-22
Management Services	131	216	256	85	40
Other Services	349	429	391	80	-38
Transportation & Warehousing	483	560	468	77	-92
Finance & Insurance	151	227	262	76	35
Agriculture	455	515	532	60	17
Utilities	251	311	242	60	-69
Accommodations & Food Service	569	609	503	40	-106
Forestry, Fishing, & Ag Support	90	108	106	18	-2
Wholesale Trade	73	89	129	16	40
Health Care & Social Assistance	326	335	378	9	43
Arts, Entertainment, & Recreation	105	113	125	8	12
Federal - Civilian	64	68	67	4	-1
Military	72	76	74	4	-2
Educational Services	18	19	25	1	6
State Government	133	134	145	1	11
Information	92	68	65	-24	-3
Retail Trade	711	668	654	-43	-14
<b>Total</b>	<b>7,159</b>	<b>9,596</b>	<b>8,811</b>	<b>2,437</b>	<b>-785</b>

Employment in Converse County increased by 34 percent from 2005 through 2014 (Figure 12). The largest increases in employment came from Mining (+1,500 jobs), Local Government (+265 jobs) and Construction (+256 jobs). During this time period, only two sectors lost employment, Retail Trade (-43) and Information (-24). However, employment in the county declined by 8 percent between 2014 and 2016. During this time period, 14 sectors lost employment with Mining (-362), Construction (-327), and Accommodations & Food Services (-106) suffering the largest losses.

**Data Source:** U.S. Department of Commerce. 2018. Bureau of Economic Analysis, Regional Economic Accounts, Local Area Personal Income & Employment, Table CA25 and Woods & Poole Economics. 2018. 2018 State Profile: State and County Projections to 2050, Washington, D.C (numbers in italics).

Figure 13.  
Comparison of Average Earnings Per Job: 2005-2016  
(Adjusted for Inflation)



In addition to the number of jobs, the labor earnings associated with those jobs is an important consideration. Overall average earnings per job are a general measure of the economic well-being of the local workforce. Figure 13 illustrates average earnings per job for Converse County compared to Wyoming and the U.S. In 2005, the average earnings per job for the county was \$35,646, in 2009 dollars, which was 14 percent below the Wyoming average earnings per job (\$41,439) and 8 percent below the U.S. average earnings per job (\$38,916). From 2005 through 2016, after adjusting for inflation, county average earnings per job increased by 30 percent to \$46,226. As a result of this increase, 2016 county average earnings per job were only 7 percent below the Wyoming average earnings per job (\$49,779) and 4 percent above the U.S. average earnings per job (\$44,478). While total per capita income for the county was 7 percent below the state average, the Wyoming Economic Analysis Division estimates that the county's cost-of-living for the second quarter of 2016 was 2 percent below the state average. This difference suggests that, on average, the county workforce was economically slightly worse-off than the rest of the state in 2016. Due to declines in the county's energy sector, average earnings per job declined by 8 percent from 2015 to 2016 (\$50,298 to \$46,226).

**Data Source:** U.S. Department of Commerce. 2018. Bureau of Economic Analysis, Regional Economic Accounts, Local Area Personal Income & Employment, Table CA30.

**Figure 14.****Average Earnings Per Job for Converse County: 2016**

Sector	Jobs	Earnings	
		(\$1,000)	AEPJ
Utilities	242	\$29,322	\$121,165
Transportation & Warehousing	468	\$40,851	\$87,288
Federal - Civilian	67	\$5,526	\$82,478
State Government	145	\$11,758	\$81,090
Mining	1,500	\$115,744	\$77,163
Construction	524	\$39,447	\$75,281
Local Government	1,420	\$103,607	\$72,963
Real Estate, Rental, & Leasing	410	\$23,198	\$56,580
Manufacturing	219	\$11,839	\$54,059
Management Services	256	\$10,553	\$41,223
Professional Services	316	\$12,391	\$39,212
Health Care & Social Assistance	378	\$14,757	\$39,040
Wholesale Trade	129	\$4,809	\$37,279
Finance & Insurance	262	\$8,618	\$32,893
Forestry, Fishing, & Ag Support	106	\$3,372	\$31,811
Information	65	\$2,042	\$31,415
Other Services	391	\$12,118	\$30,992
Military	74	\$2,256	\$30,486
Retail Trade	654	\$17,758	\$27,153
Accommodations & Food Service	503	\$13,497	\$26,833
Arts, Entertainment, & Recreation	125	\$1,404	\$11,232
Educational Services	25	\$136	\$5,440
Agriculture	532	-\$220	-\$414
<b>Total</b>	<b>8,811</b>	<b>484,783</b>	<b>\$55,020</b>

Average earnings per job (AEPJ), which includes employer paid benefits, varies substantially by sector. In 2016, AEPJ in Converse County ranged from over \$121,000 for the Utilities sector to a negative \$414 for agriculture (Figure 14). After Utilities, the next highest AEPJ was Transportation & Warehousing (\$87,288), Federal-Civilian (\$82,478), and State Government (\$81,090). Of the 23 sectors in the county's economy, 7 had AEPJ greater or comparable to the Wyoming average (\$55,116). The 7 sectors with AEPJ greater than or comparable to the Wyoming average represented only 57 percent of the total employment in the county resulting in the overall lower AEPJ for the county. The negative average earnings per job for the county's agriculture sector are a reflection of the variability in agriculture income with 2016 being a down year for the county's agriculture.

**Data Source:** U.S. Department of Commerce. 2018. Bureau of Economic Analysis, Regional Economic Accounts, Local Area Personal Income & Employment, Table CA25 and Woods & Poole Economics. 2018. 2018 State Profile: State and County Projections to 2050, Washington, D.C (numbers in italics).

**Figure 15.****Total Labor Earnings for Converse County: 2016**

Sector	Jobs	AEPJ	Earnings (\$1,000)	Percent
Mining	1,500	\$77,163	\$115,744	23.9%
Local Government	1,420	\$72,963	\$103,607	21.4%
Transportation & Warehousing	468	\$87,288	\$40,851	8.4%
Construction	524	\$75,281	\$39,447	8.1%
Utilities	242	\$121,165	\$29,322	6.0%
Real Estate, Rental, & Leasing	410	\$56,580	\$23,198	4.8%
Retail Trade	654	\$27,153	\$17,758	3.7%
Health Care & Social Assistance	378	\$39,040	\$14,757	3.0%
Accommodations & Food Service	503	\$26,833	\$13,497	2.8%
Professional Services	316	\$39,212	\$12,391	2.6%
Other Services	391	\$30,992	\$12,118	2.5%
Manufacturing	219	\$54,059	\$11,839	2.4%
State Government	145	\$81,090	\$11,758	2.4%
Management Services	256	\$41,223	\$10,553	2.2%
Finance & Insurance	262	\$32,893	\$8,618	1.8%
Federal - Civilian	67	\$82,478	\$5,526	1.1%
Wholesale Trade	129	\$37,279	\$4,809	1.0%
Forestry, Fishing, & Ag Support	106	\$31,811	\$3,372	0.7%
Military	74	\$30,486	\$2,256	0.5%
Information	65	\$31,415	\$2,042	0.4%
Arts, Entertainment, & Recreation	125	\$11,232	\$1,404	0.3%
Educational Services	25	\$5,440	\$136	0.0%
Agriculture	532	-\$414	-\$220	0.0%
<b>Total</b>	<b>8,811</b>	<b>\$55,020</b>	<b>484,783</b>	<b>100.0%</b>

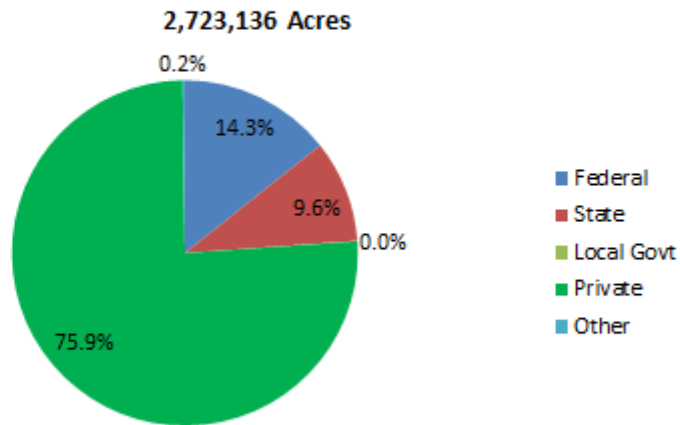
The combination of the number of jobs and the average earnings per job determines the relative importance of individual sectors in terms of total labor earnings in the Converse County economy (Figure 15). Labor earnings are important because they represent the major source of personal income for county residents. Overall, county employment generated \$484.8 million in labor earnings in 2016. Mining (24 percent) and Local Government (21 percent) were the largest source of labor earnings for the county. Combined these two sectors represented 45 percent of total county labor earnings.

**Data Source:** U.S. Department of Commerce. 2018. Bureau of Economic Analysis, Regional Economic Accounts, Local Area Personal Income & Employment, Table CA25 and Woods & Poole Economics. 2018. 2018 State Profile: State and County Projections to 2050, Washington, D.C (numbers in italics).

# **LAND CHARACTERISTICS**



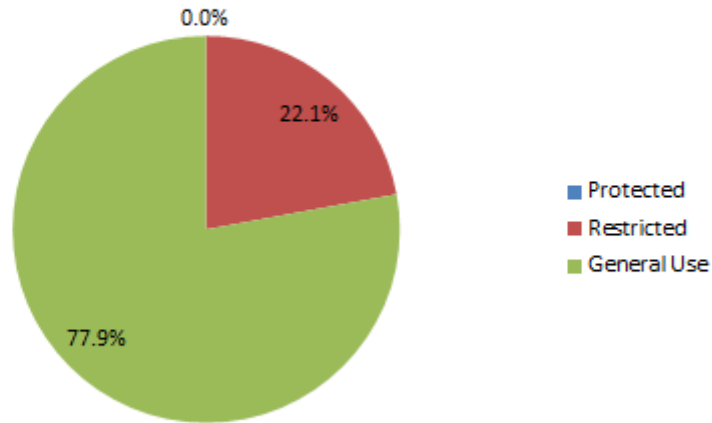
Figure 16.  
Land Ownership in Converse County: 2012



Converse County contains 2.7 million acres of land (Figure 16). Private land is the largest category of landownership in the county, accounting for 76 percent of the land area (2.1 million acres). Federal land represents 14 percent of the land area (389,440 acres). Of this total, the BLM manages 33 percent (130,048 acres) and the Forest Service manages 67 percent (259,264 acres). State land represents 10 percent of the county’s land area (260,672 acres), with almost all this land being state trust land. Local government owns less than one percent of the county’s land area (1,152 acres) with 78 percent owned by the city (896 acres), 11 percent owned by the school districts (128 acres), and 11 percent owned by the county (128 acres). Information from the Wyoming Department of Revenue on acres taxed as agricultural land indicates that 92 percent of the private land in the county is in agricultural use (1.9 million acres). Of this total, 97 percent is classified as range land (1.8 million acres), 2 percent is classified as irrigated crop land (42,588 acres), and less than one percent is classified as dry crop land (6,026 acres).

**Data Source:** Wyoming Department of Administration and Information. 2018. Wyoming and County Profiles 2017.

Figure 17.  
Management Designation of Federal Lands in Converse County



Federal lands are managed for different purposes under differing statutory authority. Three categories of designation are presented in Figure 17: 1) Protected, 2) Restricted., and 3) General Use.

- Protected Areas include National Parks and Preserves (NPS), Wilderness (NPS, FWS, FS, BLM), National Conservation Areas (BLM), National Monuments (NPS, FS, BLM), National Recreation Areas (NPS, FS, BLM), National Wild and Scenic Rivers (NPS, FS, BLM), Water Fowl Protection Areas (FWS), Wildlife Management Areas (FWS), Research Natural Areas (FS, BLM), Areas of Critical Environmental Concern (BLM), and National Wildlife Refuges (FWS).
- Restricted Areas include Wilderness Study Areas (NPS, FWS, FS, BLM) and Inventoried Roadless Areas (FS).
- General Use Areas include Public Domain Lands (BLM) and National Forests and Grasslands (FS).

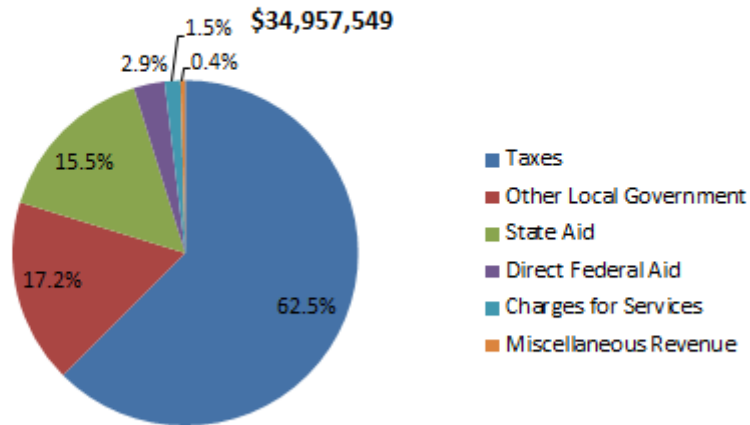
This data was obtained from the Economic Profile System – Human Dimension Toolkit (NPS = National Park Service, FWS = Fish and Wildlife, FS = Forest Service, and BLM = Bureau of Land Management).

In Converse County, Economic Profile System data indicates that 78 percent of Federal lands in the county are designated for general use with 22 percent designated for restricted use, and no Federal lands designated for protected use. In comparison, 21 percent of total Federal lands in Wyoming are classified as protected, 13 percent are classified as restricted and 66 percent are classified as general use.

**Data Source:** Headwaters Economics. 2018. Economic Profile System-Human Dimension Toolkit, A Profile of Land Use (page 3).

# **County Government Finances**

**Figure 18.**  
**Converse County Government Revenue: FY2017**

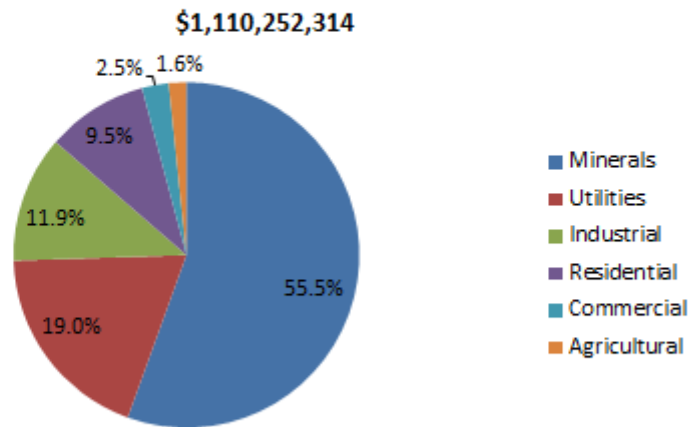


Wyoming Department of Audit information indicates that the total revenue for Converse County Government, excluding the airport and the hospital, was \$35.0 million in FY2017 (Figure 18). Of this total, the largest sources were Taxes which included property taxes and any optional sales tax revenue (62 percent), Other Local Government Revenue (17 percent) and State Aid which included the county’s share of the 4 percent sales and use tax revenue (15 percent). Combined, these three sources represented 95 percent of the total county government revenue in FY2017. Following these three revenue sources were Direct Federal Aid (3 percent), Charges for Services (1 percent), and Miscellaneous Revenue (less than 1 percent). Combined, these revenue sources represented 5 percent of the total county government revenue in FY2017. Per capita revenue for the county in FY2017 was \$2,532, which was two times the state average (\$1,254).

From FY2013 to FY 2015, county government revenue nearly doubled from \$23.9 million to \$46.3 million. However, between FY2015 and FY2017 county government revenue declined from \$46.3 million to \$35.0 million (-25 percent). This variability is probably a reflection of the changes in the level of activity in the county’s energy industry.

**Data Source:** Wyoming Department of Audit. 2018. Cost of Maintaining County Government in Wyoming: For Fiscal Year July 1, 2016-June 30, 2017: As prepared from Reports submitted to the Department of Audit Public Funds.

Figure 19.  
Converse County Assessed Valuation: 2017



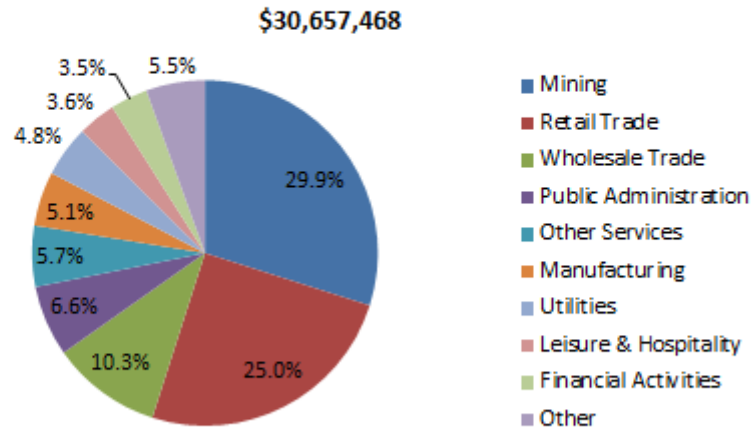
The total assessed valuation for Converse County in 2017 was \$1.1 billion (Figure 19). Fifty-five percent of the total valuation was from Minerals. Following Minerals was Utilities (19 percent), Industrial Property (12 percent), Residential Property (9 percent), Commercial Property (3 percent), and Industrial Agricultural Lands (2 percent). The county's per capita assessed valuation (\$80,401) was 2.5 times greater than Wyoming's per capita assessed valuation (\$32,495). Out of Wyoming's 23 counties, Converse County ranked 7<sup>th</sup> in terms of total assessed valuation trailing only Campbell, Sweetwater, Sublette, Teton, Laramie, and Natrona.

In terms of Mineral Production, crude oil represented 64 percent of total county mineral assessed valuation, coal represented 26 percent, natural gas represented 8 percent, uranium represented 1 percent, sand & gravel represented less than one percent, and leonardite also represented less than one percent.

From 2013 to 2015, the county's assessed valuation increased from \$1.2 billion to \$1.8 billion (+57 percent). Eighty-nine percent of this increase was due to increases in mineral assessed valuation. However, from 2015 to 2017, the county's assessed valuation decreased from \$1.8 billion to \$1.1 billion (-39 percent). During this time period, the decrease in mineral assessed valuation exceeded the decrease in total assessed valuation.

**Data Sources:** Wyoming Department of Revenue. 2018. 2017 Annual Report.

Figure 20.  
Converse County Sales & Use Tax Revenue: FY2017

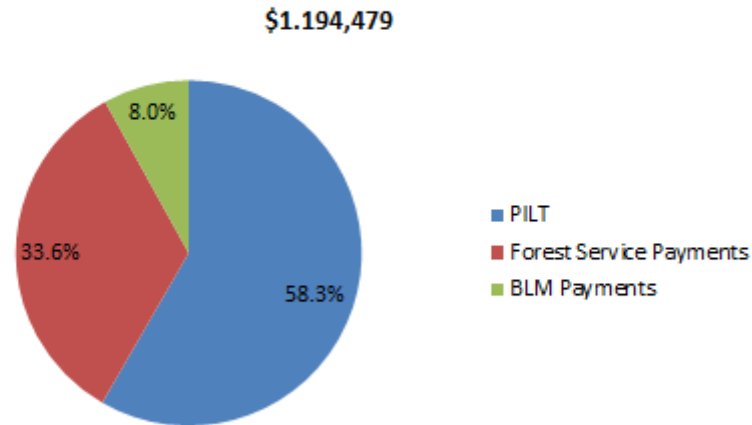


In FY2017, Converse County's 5 percent sales and use tax generated \$30.7 million in tax revenue (Figure 20). Of this total, 56 percent (\$17.2 million) was retained by state government and 44 percent (\$13.5 million) was returned to local governments in the county. In FY2017, county government's share of the returned sales and use tax revenue was approximately \$4.7 million (35 percent) with the remaining \$8.8 million (65 percent) going to municipal governments in the county. Thirty percent of the county's total sales and use tax revenue came from Mining. Following Mining was Retail Sales (25 percent) and Wholesale Trade (10 percent). Combined, these three sectors contributed 65 percent of the county's total sales and use tax revenue. Public Administration, Other Services, Manufacturing, Utilities, Leisure & Hospitality, Financial Services, and Other, combined, contributed the remaining 35 percent of total county sales and use tax revenue. Public Administration represents sales and use tax revenue on motor vehicle purchases which are collected at the time of registration in Wyoming. The county's per capita sales & use tax revenue (\$2,220) was 63 percent higher than Wyoming's per capita sales & tax revenue (\$1,364).

At a 4 percent sales and use tax rate, county sales & use tax revenues increased from \$47.6 million in FY2013 to \$64.4 million in FY2015. Fifty-nine percent of this increase came from increased sales & use tax revenue from mining. However, county 4 percent sales & use tax revenue decreased from \$64.4 million to \$24.4 million (-62 percent) from FY2015 to FY2017. Fifty-nine percent of this decrease came from decreased sales & use tax revenue from mining.

**Data Sources:** Wyoming Department of Administration and Information, Economic Analysis Division. 2016. Wyoming Sales, Use, and Lodging Tax Revenue Report, 41st Edition.

Figure 21.  
Converse County Federal Land Payment: FY2015



The Economic Profile System-Human Dimensions Toolkit indicates that federal land payments to local governments in Converse County totaled \$1.2 million in FY2015 (Figure 21). The largest source of federal land payments to the county was Payment in Lieu of Taxes (PILT) representing 58 percent of the total amount (\$696,834). PILT payments are intended to compensate county governments for non-taxable federal lands within their borders. It is based on a maximum per-acre payment reduced by other federal revenue sharing payments and are subject to a per capita population cap. The second largest source of federal payments to the county was Forest Service Payments representing 34 percent of the total amount (\$401,836). Forest Service payments can include 25 Percent Revenue Sharing funds, Secure Rural School & Community Self Determination Act funds, and Bankhead-Jones Forest Grasslands funds. The third source of federal payments to the county was BLM payments representing 8 percent of the total amount (\$95,809). BLM payments represent revenue sharing funds including grazing fees through the Taylor Grazing Act. Of the \$1.2 million in Federal land payments to the county in FY2015, 64 percent went to county government (\$763,283), 1 percent went to local school districts (\$16,213), 4 percent (\$45,572) to grazing districts, and 31 percent went to other (\$369,411). In FY2015, Federal Land Payments to the county represented \$1.72 per eligible acre of Federal land. The average for Wyoming was \$0.92 per eligible acre of Federal land.

**Data Source:** Headwaters Economics. 2018. Economic Profile System-Human Dimension Toolkit, A Profile of Federal Land Payments (page 1).

**Figure 22.****Converse County Government Costs, FY2014, FY2016, & FY2017**

Costs	FY2014 Amount	FY2016 Amount	FY2017 Amount	Change FY14-FY16	Change FY16-FY17
Construction	\$2,518,589	\$21,874,613	\$19,493,378	\$19,356,024	-\$2,381,235
Road and Bridge	\$3,901,149	\$4,000,919	\$3,499,633	\$99,770	-\$501,286
County Sheriff	\$2,196,860	\$2,866,924	\$2,623,819	\$670,064	-\$243,105
Jail	\$1,654,023	\$1,894,998	\$2,098,308	\$240,975	\$203,310
Capital	\$2,567,836	\$1,682,655	\$1,339,650	-\$885,181	-\$343,005
County Attorney	\$1,021,345	\$1,105,898	\$1,147,878	\$84,553	\$41,980
Libraries	\$971,537	\$953,779	\$1,100,709	-\$17,758	\$146,930
Fire	\$463,398	\$1,397,870	\$855,807	\$934,472	-\$542,063
County Administration	\$375,831	\$538,074	\$541,963	\$162,243	\$3,889
Courthouse	\$563,019	\$836,843	\$538,366	\$273,824	-\$298,477
County Clerk	\$466,770	\$533,928	\$532,133	\$67,158	-\$1,795
County Treasurer	\$407,429	\$484,272	\$488,899	\$76,843	\$4,627
Distict Court	\$372,333	\$493,673	\$483,150	\$121,340	-\$10,523
County Assessor	\$403,063	\$450,704	\$474,068	\$47,641	\$23,364
Health (Not Hospital)	\$416,929	\$473,012	\$442,887	\$56,083	-\$30,125
County Commissioners	\$281,049	\$336,029	\$356,765	\$54,980	\$20,736
Social Services - Other	\$276,812	\$349,094	\$342,937	\$72,282	-\$6,157
Civil Defense/Emergency	\$188,530	\$289,097	\$226,403	\$100,567	-\$62,694
Parks/Recreation/Museum	\$173,736	\$184,670	\$199,653	\$10,934	\$14,983
Finacial Administration	\$317,682	\$216,756	\$157,237	-\$100,926	-\$59,519
Elections	\$97,560	\$107,707	\$148,578	\$10,147	\$40,871
Social Services - Welfare	\$146,353	\$364,578	\$137,123	\$218,225	-\$227,455
Agricultural Department	\$124,506	\$119,443	\$134,638	-\$5,063	\$15,195
County Surveyor	\$4,427	\$99,037	\$96,642	\$94,610	-\$2,395
Other Expenses	\$123,181	\$130,512	\$80,900	\$7,331	-\$49,612
County Coroner	\$57,640	\$56,241	\$68,975	-\$1,399	\$12,734
County Planner	\$46,793	\$45,230	\$45,654	-\$1,563	\$424
Fair	\$50,079	\$40,114	\$39,905	-\$9,965	-\$209
Natural Resources	\$15,000	\$0	\$0	-\$15,000	\$0
<b>Total</b>	<b>\$20,203,459</b>	<b>\$41,926,670</b>	<b>\$37,696,058</b>	<b>\$21,723,211</b>	<b>-\$4,230,612</b>

With increased energy development in the county, Converse County government costs, excluding the airport and the hospital, more than doubled between FY2014 and FY2016, increasing by \$21.7 million. Eighty-nine percent of this increase was in Construction expenditures. The county also saw substantial increases in Fire, County Sheriff, Courthouse, Jail, and Welfare expenses. With the recent decline in energy activity in the county, county government costs decreased by 10 percent (-\$4.2 million) between FY2016 and FY 2017. Fifty-six percent of this decrease was in Construction expenditures. The county



also saw substantial decreases in Fire, Road & Bridge, Capital, Courthouse, County Sheriff, and Welfare expenditures. In FY2014 and FY2015, county non-enterprise revenues exceeded county non-enterprise costs by \$8.2 million and \$16.8 million, respectively. However, in FY2016 and FY2017 county non-enterprise costs exceeded county per capita revenues by \$7.4 million and \$2.7 million respectively.

**Data Source:** Wyoming Department of Audit. 2018. Cost of Maintaining County Government in Wyoming: For Fiscal Year July 1, 2016-June 30, 2017, As prepared from Reports submitted to the Department of Audit Public Funds

# **NATURAL RESOURCE BASED INDUSTRY PROFILES**

**Figure 23.**  
**Converse County Mining Industry**

Mineral Production (2016)	Amount
Crude Oil (Bbls)	11,415,931
Natural Gas (MCF)	38,784,797
Coal (Tons)	16,316,153
Uranium (Lbs)	629,301
Sand & Gravel (Tons)	1,066,519
Leonardite (Lbs)	23,840
<u>Tax Revenue (2017 from 2016 Production)</u>	
Assessed Valuation	\$616,426,933
Property Tax Revenue	\$36,477,299
<u>Employment (2016)</u>	
Full & Part-Time Jobs	1,500
Labor Earnings	\$115,744,000
Average Earnings Per Job	\$77,163

In 2016, the Mining sector in Converse County produced 11.4 million barrels of oil and 38.9 bcf of natural gas, 16.3 million tons of coal, 629,301 pounds of uranium, 1.1 tons of sand and gravel, and 23,840 pounds of leonardite (Figure 23). The mining production in the county had an assessed valuation of \$616.4 million dollars in 2017 (2017 assessed valuation for mineral production is based on 2016 production). This valuation represented 55 percent of the total assessed valuation for the county. Based on the county mill levy, the mineral industry generated \$36.5 million in property tax revenue in 2017. Of this total, 76 percent went to K-12 schools (\$27.7 million), 20 percent went to county government (\$7.4 million), and 4 percent went to county special districts (\$1.4 million). Special districts in the county included: Hospital, Cemetery, Solid Waste Disposal, and Conservation. In 2016, the mining industry in the county supported 1,500 jobs with labor earnings of \$115.7 million. This represented 17 percent of total employment and 24 percent of total labor earnings in the county. The percent of total employment in mining for the county was over 23 times the national percentage (0.7 percent), indicating that Mining was an area of specialization within the county's economy. The average earnings per job for mining in the county were \$77,163, which was 42 percent above the county average (\$55,020). The mining industry ranked 1<sup>st</sup> out of 23 sectors in the county's economy in terms of total employment and 1<sup>st</sup> out of 23 sectors in terms of total labor earnings.

**Data Sources:** Wyoming Oil and Gas Conservation Commission. 2016. OnLine Stats Book, 2015 County Report. Wyoming Department of Revenue. 2016. 2016 Annual Report, State Assessed Valuation: Production Year 2015. U.S. Department of Commerce. 2016. Bureau of Economic Analysis, Regional Economic Accounts, Local Area Personal Income & Employment, Table CA25 & CA5.

**Figure 24.**  
**Converse County Agricultural Industry**

	Amount
<u>Assets (2012)</u>	
Total Land in Agriculture (Acres)	2,447,448
Cattle Inventory (Head)	59,177
Sheep Inventory (Head)	54,578
Investment – Land, Buildings, Equipment	\$976,469,000
Property Taxes Paid	\$2,015,000
<u>Gross Revenue (2016)</u>	
	\$42,682,000
<u>Employment (2016)</u>	
Jobs	532
Labor Earnings	-\$220,000
Average Earnings Per Job	-\$414

In 2012, there were 410 agricultural operations in Converse County. These operations managed 2.4 million acres in the county (Figure 24). Included in this acreage is 92 percent of the private land in the county. Of the total land in agriculture, 96 percent is classified as grazing land, 2 percent as cropland, less than 1 percent as woodlands, and 1 percent as farmsteads and buildings. The average size of an agricultural operation in the county was 5,969 acres. The total cattle and sheep inventory in the county was 113,755 head, including 59,177 head of cattle and calves and 54,578 head of sheep and lambs. In 2014, the county ranked 11<sup>th</sup> out of 23 counties in Wyoming in terms of all cattle and 1<sup>st</sup> out of 23 counties in terms of all sheep. It also ranked 9<sup>th</sup> in alfalfa hay production and 11<sup>th</sup> in other hay production. In terms of investment by agricultural operators, the estimated total market value of lands, buildings, and equipment for agriculture in the county was \$976.5 million. This total included \$925.1 million in land and buildings and \$51.4 million for equipment and machinery. The average investment per agricultural operation was \$2.4 million. In 2012, agricultural operations in the county paid \$2.0 million in property taxes.

The gross revenue for the agricultural industry in the county in 2015 was \$42.7 million. Of this total, 73 percent was from cash receipts for livestock, 11 percent was from cash receipts for crops, 14 percent was from miscellaneous sources, and 2 percent was from government payments. Total employment for agriculture in 2016 was 532 jobs with labor earnings of -\$220,000. This represented 6 percent of the total jobs in the county. The percent of total employment in agriculture for the county was more than 4 times the national percentage (1.4 percent) indicating that agriculture was an area of specialization within the county's economy. The negative labor earnings for agriculture in 2016 are an indication of the variability in agricultural income. For example, in 2014, county agriculture labor earnings were nearly \$5.3 million. Average earnings per job in agriculture also tend to be lower because the employment estimates include a large number of small part-time and lifestyle operations that generate

limited labor earnings. Bureau of Labor Statistics (BLS) data may be a better indicator of average earnings per job for commercial agricultural employment in the county. For 2016, BLS data indicates that the average earnings per job for agricultural employment in the County were \$38,010. The county's agriculture industry ranked 4<sup>th</sup> out of 23 sectors in the county's economy in terms of total employment and 23<sup>rd</sup> out of 23 sectors in terms of total labor earnings.

In addition to jobs and income, agriculture also provides important natural resource amenities such as open space. Open space offers landscapes, lifestyles, and wildlife habitat that can have value to both residents and visitors. Open space is particularly important because it determines the character of the landscapes surrounding a community. Out of economic necessity, most agricultural operations in the county cover large areas of land; as a result, agriculture can contribute substantially to maintaining open spaces on private lands in a region. As noted above, 92 percent of the private land in county is in agricultural use. Due to the natural resource amenities associated with agricultural land there is public support for the retention of lands in agriculture. For example, a recent survey sponsored by the Wyoming Stock Growers Association, the Wyoming Stock Growers Land Trust, the Nature Conservancy, and the University of Wyoming, found that nearly 80 percent of Wyoming residents felt that they personally benefit from the presence of farms and ranches in Wyoming. In addition, 76 percent of respondents were concerned with the loss of family farms and ranches in the State. Other issues of serious concerns to respondents included the availability of water for farming and ranching (71 percent), and natural areas and rangeland being split up by new development (66 percent).

**Data Sources:** USDA. 2015. National Agricultural Statistics Service, 2012 Census of Agriculture: Wyoming State and County Data, Volume 1, Geographic Series Part 50, AC-12-A-50, Table 1. County Summary Highlights: 2012 and Table 8. Farms, Land in Farms, Value of Land and Buildings, and Land Use: 2012 and 2007. U.S. Department of Commerce. 2016. Bureau of Economic Analysis, Regional Economic Accounts, Local Area Personal Income & Employment, Tables CA45, CA25, & CA5. Freedman, K.S. and N.M. Korfanta. 2014. Public Opinion on Natural Resource Conservation in Wyoming: Wyoming Open Space Initiative, Ruckelshaus Institute, A Division of the Haub School of Environment and Natural Resources, UW Extension B-1258, October 2014.

**Figure 25.**  
**Converse County Travel Industry, 2017**

	Amount
Person-Nights	460,000
Visitor Spending	\$46.2 Million
Employment	550 Jobs
Labor Income	\$13.4 Million
Average Earnings Per Job	\$24,364
Local Tax Revenue	\$0.8 million
State Tax Revenue	\$1.8 million

Dean Runyan Associates estimates that Converse County hosted 460,000 visitor nights in 2017 (Figure 25). This compares to 505,000 nights in 2015 and 414,000 nights in 2016. The decrease between 2015 and 2016 may have been due to declines in the energy industry workforce in the county. Part of the increase from 2016 to 2017 may have been due to the visitors traveling to see the solar eclipse. These visitors are estimated to have spent \$46.2 million during their stay in the county. In terms of accommodations, 34 percent of this spending was by visitors staying in hotels/motels, 48 percent by visitors staying in campgrounds, 12 percent was by visitors staying in private homes, 3 percent was by visitors staying in vacation homes, and 2 percent was by visitors not staying overnight. In terms of purchases, 18 percent was spent on accommodation, 25 percent was spent on food services, 10 percent was spent on food stores, 13 percent was spent on local transportation & gas, 19 percent was spent on arts, entertainment, and recreation, and 14 percent was spent on retail sales.

Dean Runyan estimated that the travel industry generated 550 direct jobs in the county in 2016. This represents 6 percent of total employment in the county. Fifty-one percent of these jobs were in the accommodations and food service sector, 25 percent were in the arts/entertainment/recreation sector, and 20 percent were in the retail trade sector and 4 percent were in the other travel sector. The labor earnings associated with this employment was estimated to be \$13.4 million. This represents 3 percent of the total labor earnings for the county. Average earnings per job for the travel industry in the county for 2017 were \$24,364. Average earnings per job for the travel industry were 44 percent the county average (\$55,020). The tax revenue associated with the county's travel industry is estimated to be \$2.6 million with \$0.8 million (31 percent) going to local government and \$1.8 million (69 percent) going to state government.

**Data Source:** Dean Runyan Associates. 2018. Wyoming Travel Impacts: 2000-2017, Prepared for Wyoming Office of Tourism, Cheyenne, Wyoming.

# **TABLES**

<b>Table 1. Population 2005-2017</b>				
Year	Converse	Wyoming	U.S.	
2005	12,595	514,157	295,516,599	
2006	12,801	522,667	298,379,912	
2007	13,071	534,876	301,231,207	
2008	13,486	546,043	304,093,966	
2009	13,839	559,851	306,771,529	
2010	13,821	564,376	309,338,421	
2011	13,736	567,602	311,644,280	
2012	14,025	576,608	313,993,272	
2013	14,365	582,341	316,234,505	
2014	14,219	583,334	318,622,525	
2015	14,312	586,102	321,039,839	
2016	14,127	584,910	323,405,935	
2017	13,809	579,315	325,719,178	
Change	1,214	65,158	30,202,579	
Percent	9.6%	12.7%	10.2%	
Source	Converse	Wyoming	Converse	Wyoming
Natural Increase	973	41,479	7.7%	8.1%
Net Migration	241	23,679	1.9%	4.6%
Total Change	1,214	65,158	9.6%	12.7%

Source: WY Department of A&I - Economic Analysis Division

**Table 2. Primary Reason for Moving to Converse County, 2010-2017**

Reason	Number	Percent
Job Related	175	54.7%
Better Quality of Life	21	6.6%
Friends or Relatives	88	27.7%
Other	35	11.0%
Total	319	100.0%

Source: Wyoming Community Development Authority



<b>Table 3. Age of Population, 2016</b>						
				Converse	Wyoming	U.S.
Age	Converse	Wyoming	U.S.	Percent	Percent	Percent
Under 5	1,070	38,145	19,927,037	7.5%	6.5%	6.2%
5 to 17	2,574	100,756	53,715,248	18.1%	17.2%	16.6%
18 to 24	1,027	55,188	30,843,811	7.2%	9.4%	9.5%
25 to 44	3,547	153,282	85,147,399	25.0%	26.2%	26.4%
45 to 64	3,882	150,318	84,249,823	27.4%	25.7%	26.1%
65 and over	2,091	87,812	49,244,195	14.7%	15.0%	15.2%
<b>Total</b>	<b>14,191</b>	<b>585,501</b>	<b>323,127,513</b>	<b>100.0%</b>	<b>100.0%</b>	<b>100.0%</b>
Median Age	38.5	37.1	37.9			

Source: WY Department of A&I - Economic Analysis Division

<b>Table 4. Race and Ethnicity of Population 2016</b>						
				Converse	Wyoming	U.S.
Race	Converse	Wyoming	U.S.	Percent	Percent	Percent
White	13,695	550,658	255,439,895	96.5%	94.0%	79.1%
Black	89	6,717	40,229,236	0.6%	1.1%	12.4%
Native American	129	12,322	2,387,421	0.9%	2.1%	0.7%
Asian	74	5,410	17,741,457	0.5%	0.9%	5.5%
Pacific Islander	7	477	567,208	0.0%	0.1%	0.2%
Two or More	197	9,917	6,762,296	1.4%	1.7%	2.1%
<b>Total</b>	<b>14,191</b>	<b>585,501</b>	<b>323,127,513</b>	<b>100.0%</b>	<b>100.0%</b>	<b>100.0%</b>
				Converse	Wyoming	U.S.
Ethnicity	Converse	Wyoming	U.S.	Percent	Percent	Percent
Hispanic	1,152	58,413	57,470,287	8.1%	10.0%	17.8%
Non-Hispanic	13,039	527,088	265,657,226	91.9%	90.0%	82.2%
<b>Total</b>	<b>14,191</b>	<b>585,501</b>	<b>323,127,513</b>	<b>100.0%</b>	<b>100.0%</b>	<b>100.0%</b>

Source: WY Department of A&I - Economic Analysis Division

<b>Table 5. Per Capita Income 2016</b>						
				Converse	Wyoming	U.S.
Type	Converse	Wyoming	U.S.	Percent	Percent	Percent
Net Earnings	\$33,180	\$30,875	\$31,148	64.8%	56.0%	63.2%
Transfer Payments	\$7,944	\$7,356	\$8,567	15.5%	13.3%	17.4%
Investment	\$10,058	\$16,885	\$9,531	19.7%	30.6%	19.4%
<b>Total</b>	<b>\$51,182</b>	<b>\$55,116</b>	<b>\$49,246</b>	<b>100.0%</b>	<b>100.0%</b>	<b>100.0%</b>
	Deflated	Deflated	Deflated	Deflated	Deflated	Deflated
	Converse	Converse	Converse	Converse	Wyoming	U.S.
Year	Earnings	Transfer	Investment	Total	Total	Total
2005	\$24,496	\$4,927	\$6,223	\$35,646	\$41,439	\$38,916
2006	\$25,295	\$5,190	\$6,603	\$37,088	\$45,612	\$40,266
2007	\$26,443	\$5,323	\$5,694	\$37,461	\$46,054	\$41,009
2008	\$30,127	\$5,966	\$6,533	\$42,626	\$48,509	\$41,055
2009	\$28,138	\$6,065	\$6,252	\$40,455	\$43,549	\$39,376
2010	\$28,489	\$6,362	\$5,739	\$40,590	\$44,711	\$39,622
2011	\$30,946	\$6,296	\$7,363	\$44,605	\$47,511	\$40,769
2012	\$32,271	\$6,100	\$7,406	\$45,776	\$49,724	\$41,728
2013	\$33,096	\$6,007	\$7,335	\$46,437	\$49,025	\$41,377
2014	\$35,506	\$6,485	\$7,873	\$49,863	\$51,625	\$42,596
2015	\$34,597	\$6,770	\$8,932	\$50,299	\$51,380	\$44,235
2016	\$29,967	\$7,175	\$9,084	\$46,226	\$49,779	\$44,478
Change	\$5,471	\$2,247	\$2,862	\$10,580	\$8,340	\$5,562
Percent of Total	51.7%	21.2%	27.0%	100.0%	N.A.	N.A.
Percent Change	22.3%	45.6%	46.0%	29.7%	20.1%	14.3%
Source: Bureau of Economic Analysis						

<b>Table 6. Educational Attainment Level (Population 25 years and over), 2012-2016</b>						
Degree	Converse	Wyoming	U.S.	Converse Percent	Wyoming Percent	U.S. Percent
No High School Degree	933	29,451	27,818,380	9.8%	7.6%	13.0%
High School Graduate	3,621	112,932	58,820,411	37.9%	29.2%	27.5%
Some College	2,299	102,613	44,772,845	24.0%	26.5%	21.0%
Associate Degree	1,223	41,392	17,469,724	12.8%	10.7%	8.2%
Bachelor's Degree	1,050	66,753	40,189,920	11.0%	17.2%	18.8%
Graduate or Professional	435	33,921	24,577,867	4.5%	8.8%	11.5%
<b>Total Population 25 Yrs or Older</b>	<b>9,561</b>	<b>387,062</b>	<b>213,649,147</b>	<b>100.0%</b>	<b>100.0%</b>	<b>100.0%</b>
High School Degree or Higher	8,628	357,611	185,830,767	90.2%	92.4%	87.0%
Bachelor's Degree or Higher	1,485	100,674	64,767,787	15.5%	26.0%	30.3%
Source: WY Department of A&I - Economic Analysis Division						
<b>Table 7. Employment, 2005-2016</b>						
Year	Converse	Wyoming	U.S.			
2005	7,159	354,786	172,557,400			
2006	7,277	370,803	176,123,600			
2007	7,745	389,074	179,885,700			
2008	8,214	399,728	179,639,900			
2009	8,102	388,641	174,233,700			
2010	8,194	385,217	173,034,700			
2011	8,252	390,568	176,278,700			
2012	8,845	396,774	179,081,700			
2013	9,070	400,424	182,408,100			
2014	9,596	406,281	186,354,800			
2015	9,495	405,856	190,422,800			
2016	8,811	396,541	193,668,400			
Change	1,652	41,755	21,111,000			
Percent Change 2000-2015	23.1%	11.8%	12.2%			
Source: Bureau of Economic Analysis						

**Table 8. Converse County Employment by Sector, 2016**

Sector	Jobs	Percent	LQ
Mining	1,500	17.0%	23.28
Local Government	1,420	16.1%	2.19
Retail Trade	654	7.4%	0.74
Agriculture	532	6.0%	4.42
Construction	524	5.9%	1.14
Accommodations & Food Service	503	5.7%	0.77
Transportation & Warehousing	468	5.3%	1.43
Real Estate, Rental, & Leasing	410	4.7%	1.00
Other Services	391	4.4%	0.75
Health Care & Social Assistance	378	4.3%	0.38
Professional Services	316	3.6%	0.51
Finance & Insurance	262	3.0%	0.58
Management Services	256	2.9%	0.39
Utilities	242	2.7%	8.79
Manufacturing	219	2.5%	0.37
State Government	145	1.6%	0.60
Wholesale Trade	129	1.5%	0.41
Arts, Entertainment, & Recreation	125	1.4%	0.64
Forestry, Fishing, & Ag Support	106	1.2%	2.54
Military	74	0.8%	0.84
Federal - Civilian	67	0.8%	0.52
Information	65	0.7%	0.43
Educational Services	25	0.3%	0.12
<b>Total</b>	<b>8,811</b>	<b>100.0%</b>	<b>N.A.</b>

Source: Bureau of Economic Analysis & Woods & Poole (Italics)

Sector	2005	2014	2016	Change 2005-2014	Change 2014-2016
Mining	806	1,862	1,500	1,056	-362
Local Government	1,098	1,363	1,420	265	57
Construction	595	851	524	256	-327
Real Estate, Rental, & Leasing	241	412	410	171	-2
Professional Services	199	322	316	123	-6
Manufacturing	147	241	219	94	-22
Management Services	<i>131</i>	216	256	85	40
Other Services	349	429	391	80	-38
Transportation & Warehousing	483	560	468	77	-92
Finance & Insurance	151	227	262	76	35
Agriculture	455	515	532	60	17
Utilities	<i>251</i>	<i>311</i>	242	60	-69
Accommodations & Food Service	569	609	503	40	-106
Forestry, Fishing, & Ag Support	90	108	106	18	-2
Wholesale Trade	73	<i>89</i>	129	16	40
Health Care & Social Assistance	326	335	378	9	43
Arts, Entertainment, & Recreation*	105	113	125	8	12
Federal - Civilian	64	68	67	4	-1
Military	72	76	74	4	-2
Educational Services	<i>18</i>	<i>19</i>	25	1	6
State Government	133	134	145	1	11
Information	92	68	65	-24	-3
Retail Trade	711	668	654	-43	-14
<b>Total</b>	<b>7,159</b>	<b>9,596</b>	<b>8,811</b>	<b>2,437</b>	<b>-785</b>
Source: Bureau of Economic Analysis & Woods & Poole (Italics)					

**Table 10. Average Earnings Per Job, 2005-2016**

	Deflated	Deflated	Deflated
Year	Converse	Wyoming	U.S.
2005	\$35,646	\$41,439	\$38,916
2006	\$37,088	\$45,612	\$40,266
2007	\$37,462	\$46,054	\$41,009
2008	\$42,626	\$48,509	\$41,055
2009	\$40,455	\$43,549	\$39,376
2010	\$40,590	\$44,711	\$39,622
2011	\$44,606	\$47,511	\$40,769
2012	\$45,776	\$49,724	\$41,728
2013	\$46,437	\$49,025	\$41,377
2014	\$49,864	\$51,625	\$42,596
2015	\$50,298	\$51,380	\$44,235
2016	\$46,226	\$49,779	\$44,478
Percent Change	29.7%	20.1%	14.3%
Source: Bureau of Economic Analysis			

**Table 10a. Average Earnings Per Job by Sector for Converse County, 2016**

Sector	Jobs	Earnings	
		(\$1,000)	AEPJ
Utilities	242	\$29,322	\$121,165
Transportation & Warehousing	468	\$40,851	\$87,288
Federal - Civilian	67	\$5,526	\$82,478
State Government	145	\$11,758	\$81,090
Mining	1,500	\$115,744	\$77,163
Construction	524	\$39,447	\$75,281
Local Government	1,420	\$103,607	\$72,963
Real Estate, Rental, & Leasing	410	\$23,198	\$56,580
Manufacturing	219	\$11,839	\$54,059
Management Services	256	\$10,553	\$41,223
Professional Services	316	\$12,391	\$39,212
Health Care & Social Assistance	378	\$14,757	\$39,040
Wholesale Trade	129	\$4,809	\$37,279
Finance & Insurance	262	\$8,618	\$32,893
Forestry, Fishing, & Ag Support	106	\$3,372	\$31,811
Information	65	\$2,042	\$31,415
Other Services	391	\$12,118	\$30,992
Military	74	\$2,256	\$30,486
Retail Trade	654	\$17,758	\$27,153
Accommodations & Food Service	503	\$13,497	\$26,833
Arts, Entertainment, & Recreation	125	\$1,404	\$11,232
Educational Services	25	\$136	\$5,440
Agriculture	532	-\$220	-\$414
<b>Total</b>	<b>8,811</b>	<b>484,783</b>	<b>\$55,020</b>
Source: Bureau of Economic Analysis & Woods & Poole (Italics)			

**Table 11. Total Labor Earning for Converse County, 2016**

Sector	Jobs	AEPJ	Earnings	
			(\$1,000)	Percent
Mining	1,500	\$77,163	\$115,744	23.9%
Local Government	1,420	\$72,963	\$103,607	21.4%
Transportation & Warehousing	468	\$87,288	\$40,851	8.4%
Construction	524	\$75,281	\$39,447	8.1%
Utilities	242	\$121,165	\$29,322	6.0%
Real Estate, Rental, & Leasing	410	\$56,580	\$23,198	4.8%
Retail Trade	654	\$27,153	\$17,758	3.7%
Health Care & Social Assistance	378	\$39,040	\$14,757	3.0%
Accommodations & Food Service	503	\$26,833	\$13,497	2.8%
Professional Services	316	\$39,212	\$12,391	2.6%
Other Services	391	\$30,992	\$12,118	2.5%
Manufacturing	219	\$54,059	\$11,839	2.4%
State Government	145	\$81,090	\$11,758	2.4%
Management Services	256	\$41,223	\$10,553	2.2%
Finance & Insurance	262	\$32,893	\$8,618	1.8%
Federal - Civilian	67	\$82,478	\$5,526	1.1%
Wholesale Trade	129	\$37,279	\$4,809	1.0%
Forestry, Fishing, & Ag Support	106	\$31,811	\$3,372	0.7%
Military	74	\$30,486	\$2,256	0.5%
Information	65	\$31,415	\$2,042	0.4%
Arts, Entertainment, & Recreation	125	\$11,232	\$1,404	0.3%
Educational Services	25	\$5,440	\$136	0.0%
Agriculture	532	-\$414	-\$220	0.0%
<b>Total</b>	<b>8,811</b>	<b>\$55,020</b>	<b>484,783</b>	<b>100.0%</b>
Source: Bureau of Economic Analysis				



<b>Table 12. Land Ownership in Converse County, 2012</b>			
Owner	Acres	Percent of Total	Percent of Type
National Park Service	0	0.0%	0.0%
Forest Service	259,264	9.5%	66.6%
BLM	130,048	4.8%	33.4%
Bureau of Reclamation	128	0.0%	0.0%
<b>Total Federal</b>	<b>389,440</b>	<b>14.3%</b>	<b>100.0%</b>
State Trust Lands	260,544	9.6%	100.0%
Recreation Commission	64	0.0%	0.0%
Fish & Game	64	0.0%	0.0%
<b>Total State</b>	<b>260,672</b>	<b>9.6%</b>	<b>100.0%</b>
County	128	0.0%	11.1%
Cities	896	0.0%	77.8%
School Dist. & Colleges	128	0.0%	11.1%
<b>Total Local Government</b>	<b>1,152</b>	<b>0.0%</b>	<b>100.0%</b>
<b>Total Private</b>	<b>2,065,792</b>	<b>75.9%</b>	<b>100.0%</b>
<b>Other</b>	<b>6,080</b>	<b>0.2%</b>	<b>100.0%</b>
<b>Total Land Area</b>	<b>2,723,136</b>	<b>100.0%</b>	

Source: Wyoming County Profiles 2017

**Table 13. Acres of Taxable Agricultural Land in Converse County**

Classification	Acres	Percent
Irrigate Land	42,588	2.2%
Dry Farm Land	6,026	0.3%
Range Lands	1,855,891	97.4%
<b>Total Land</b>	<b>1,904,505</b>	<b>100.0%</b>

Source: Wyoming Department of Revenue 2012 Annual Report

**Table 14. Management Designations of Federal Land in Converse County**

Type	Acres	Percent
Protected	0	0.0%
Restricted	95,182	22.1%
General Use	335,692	77.9%
<b>Total Federal</b>	<b>430,874</b>	<b>100.0%</b>

Source: Economic Profile System - Human Dimensions Toolkit

**Table 15. Converse County Government Revenue and Costs, FY2013-FY2017**

Source	FY2013	FY2014	FY2015	FY2016	FY2017	FY2017
Taxes	\$16,101,434	\$18,391,320	\$24,345,943	\$26,140,652	\$21,849,468	62.5%
Other Local Govt.	\$0	\$824	\$10,360,176	\$28,162	\$6,029,533	17.2%
State Aid	\$6,586,905	\$8,338,188	\$10,666,474	\$6,663,944	\$5,401,016	15.5%
Direct Federal Aid	\$1,051,734	\$985,349	\$962,429	\$1,048,706	\$1,010,270	2.9%
Charges for Services	\$14,514	\$608,050	\$12,292	\$517,230	\$512,570	1.5%
Misc. Revenue	\$124,739	\$108,283	\$2,457	\$163,745	\$154,692	0.4%
<b>Total Revenue (1)</b>	<b>\$23,879,326</b>	<b>\$28,432,014</b>	<b>\$46,349,771</b>	<b>\$34,562,439</b>	<b>\$34,957,549</b>	<b>100.0%</b>
Population	14,365	14,219	14,312	14,127	13,809	
Revenue Per Capita	\$1,662	\$2,000	\$3,239	\$2,447	\$2,532	
Total Costs (1)	\$16,904,915	\$20,203,459	\$29,517,028	\$41,926,670	\$37,696,058	
Cost Per Capita	\$1,177	\$1,421	\$2,062	\$2,968	\$2,730	
(1) Excluding Enterprises						

Source: Wyoming Department of Audit

**Table 16. Converse County Assessed Valuation, 2017**

Property Type	Amount	Percent
Minerals	\$616,426,933	55.5%
Utilities	\$210,602,292	19.0%
Industrial Property	\$131,743,564	11.9%
Residential Property	\$105,556,698	9.5%
Commercial Property	\$27,691,885	2.5%
Agricultural Lands	\$18,230,942	1.6%
<b>Total Valuation</b>	<b>\$1,110,252,314</b>	<b>100.0%</b>
Crude Oil	\$395,523,045	64.2%
Natural Gas	\$50,499,834	8.2%
Coal	\$158,189,068	25.7%
Uranium	\$9,478,854	1.5%
Sand & Gravel	\$2,427,746	0.4%
Leonardite	\$308,386	0.1%
<b>Total Mineral Valuation</b>	<b>\$616,426,933</b>	<b>100.0%</b>

Source: Wyoming Department of Revenue

Industries	Sales Tax	Use Tax	Sales & Use	Percent
Mining	\$7,812,863	\$1,355,710	\$9,168,573	29.9%
Retail Trade	\$4,945,768	\$2,724,551	\$7,670,319	25.0%
Wholesale Trade	\$3,092,578	\$63,214	\$3,155,792	10.3%
Public Administration	\$1,364,467	\$669,532	\$2,033,999	6.6%
Other Services	\$1,745,483	\$1,670	\$1,747,153	5.7%
Manufacturing	\$1,558,674	\$5,191	\$1,563,865	5.1%
Utilities	\$1,071,817	\$396,761	\$1,468,578	4.8%
Leisure & Hospitality	\$1,083,542	\$5,342	\$1,088,884	3.6%
Financial Activities	\$1,053,248	\$20,047	\$1,073,295	3.5%
Construction	\$601,864	\$371,726	\$973,590	3.2%
Information	\$337,667	\$11,179	\$348,846	1.1%
Transport & Warehouse	\$21,285	\$200,830	\$222,115	0.7%
Pro & Business Services	\$111,438	\$16,387	\$127,825	0.4%
Agr & Other	\$11,405	\$0	\$11,405	0.0%
Education & Health	\$3,033	\$196	\$3,229	0.0%
<b>Total</b>	<b>\$24,815,132</b>	<b>\$5,842,336</b>	<b>\$30,657,468</b>	<b>100.0%</b>

Source: Wyoming Economic Analysis Division

**Table 18. Converse County Federal Land Payment, FY2015 (2017\$)**

Source	Amount	Percent
PILT	\$696,834	58.3%
Forest Service Payments	\$401,836	33.6%
BLM Payments	\$95,809	8.0%
<b>Total</b>	<b>\$1,194,479</b>	<b>100.0%</b>
Distributions	Amount	Percent
County Government	\$763,283	63.9%
Local School Districts	\$16,213	1.4%
Grazing Districts	\$45,572	3.8%
Other	\$369,411	30.9%
<b>Total</b>	<b>\$1,194,479</b>	<b>100.0%</b>

Source: Economic Profile System - Human Dimension Toolkit

	FY2014	FY2016	FY2017	Change	Change
County Costs (1)	Amount	Amount	Amount	FY14-FY16	FY16-FY17
Construction	\$2,518,589	\$21,874,613	\$19,493,378	\$19,356,024	-\$2,381,235
Road and Bridge	\$3,901,149	\$4,000,919	\$3,499,633	\$99,770	-\$501,286
County Sheriff	\$2,196,860	\$2,866,924	\$2,623,819	\$670,064	-\$243,105
Jail	\$1,654,023	\$1,894,998	\$2,098,308	\$240,975	\$203,310
Capital	\$2,567,836	\$1,682,655	\$1,339,650	-\$885,181	-\$343,005
County Attorney	\$1,021,345	\$1,105,898	\$1,147,878	\$84,553	\$41,980
Libraries	\$971,537	\$953,779	\$1,100,709	-\$17,758	\$146,930
Fire	\$463,398	\$1,397,870	\$855,807	\$934,472	-\$542,063
County Administration	\$375,831	\$538,074	\$541,963	\$162,243	\$3,889
Courthouse	\$563,019	\$836,843	\$538,366	\$273,824	-\$298,477
County Clerk	\$466,770	\$533,928	\$532,133	\$67,158	-\$1,795
County Treasurer	\$407,429	\$484,272	\$488,899	\$76,843	\$4,627
Distict Court	\$372,333	\$493,673	\$483,150	\$121,340	-\$10,523
County Assessor	\$403,063	\$450,704	\$474,068	\$47,641	\$23,364
Health (Not Hospital)	\$416,929	\$473,012	\$442,887	\$56,083	-\$30,125
County Commissioners	\$281,049	\$336,029	\$356,765	\$54,980	\$20,736
Social Services - Other	\$276,812	\$349,094	\$342,937	\$72,282	-\$6,157
Civil Defense/Emergency	\$188,530	\$289,097	\$226,403	\$100,567	-\$62,694
Parks/Recreation/Museum	\$173,736	\$184,670	\$199,653	\$10,934	\$14,983
Finacial Administration	\$317,682	\$216,756	\$157,237	-\$100,926	-\$59,519
Elections	\$97,560	\$107,707	\$148,578	\$10,147	\$40,871
Social Services - Welfare	\$146,353	\$364,578	\$137,123	\$218,225	-\$227,455
Agricultural Department	\$124,506	\$119,443	\$134,638	-\$5,063	\$15,195
County Surveyor	\$4,427	\$99,037	\$96,642	\$94,610	-\$2,395
Other Expenses	\$123,181	\$130,512	\$80,900	\$7,331	-\$49,612
County Coroner	\$57,640	\$56,241	\$68,975	-\$1,399	\$12,734
County Planner	\$46,793	\$45,230	\$45,654	-\$1,563	\$424
Fair	\$50,079	\$40,114	\$39,905	-\$9,965	-\$209
Natural Resources	\$15,000	\$0	\$0	-\$15,000	\$0
<b>Total</b>	<b>\$20,203,459</b>	<b>\$41,926,670</b>	<b>\$37,696,058</b>	<b>\$21,723,211</b>	<b>-\$4,230,612</b>
(1) Excluding Enterprises					
Source: Wyoming Department of Audit					

<b>Table 20. Converse County Mining Industry</b>						
<b>Mineral Production 2016</b>						
	Production					
Oil (Barrels)	11,415,931					
Gas (MCF)	38,784,797					
Coal (Tons)	16,316,153					
Uranium (Lbs)	629,301					
Sand & Gravel (Tons)	1,066,519					
Leonardite (Lbs)	23,840					
Source: Wyoming Department of Revenue						
<b>Tax Revenue 2017 (2016 Production)</b>						
	Assessed		County	K-12	Special	Total
	Valuation	Percent	Revenue	Revenue	Districts	Revenue
			(12.000 Mills)	(44.000 Mills)	(12.751 Mills)	(68.751 Mills)
Crude Oil	\$395,523,045	64.2%	\$4,746,277	\$17,746,724	\$923,942	\$23,416,942
Natural Gas	\$50,499,834	8.2%	\$605,998	\$2,265,877	\$117,968	\$2,989,843
Coal	\$158,189,068	25.7%	\$1,898,269	\$7,097,785	\$369,530	\$9,365,584
Uranium	\$9,478,854	1.5%	\$113,746	\$425,307	\$22,143	\$561,196
Sand & Gravel	\$2,427,746	0.4%	\$29,133	\$108,931	\$5,671	\$143,735
Leonardite	\$308,386	0.1%	\$3,701	\$13,837	\$720	\$18,258
<b>Total Minerals</b>	<b>\$616,426,933</b>	<b>100.0%</b>	<b>\$7,397,123</b>	<b>\$27,658,460</b>	<b>\$1,439,973</b>	<b>\$36,495,557</b>
Percent			20.3%	75.8%	3.9%	100.0%
Source: Wyoming Department of Revenue						
<b>Employment 2016</b>						
	Mining	Total	Percent			
			Mining			
Jobs	1,500	8,811	17.0%			
Labor Income	\$115,744,000	\$484,783,000	23.9%			
Average Earnings/Job	\$77,163	\$55,020	140.2%			
Source: Bureau of Economic Analysis						

<b>Table 21. Converse County Agricultural Industry, 2012</b>				
<b>Physical Characteristics</b>				
Land Use	Acres	Percent	Number of Farms	Average Size (Acres)
Total Cropland	60,858	2.5%		
Total Woodland	14,329	0.6%		
Grazing Land	2,344,692	95.8%		
Farmstead	27,569	1.1%		
<b>Total Land</b>	<b>2,447,448</b>	<b>100.0%</b>	<b>410</b>	<b>5,969</b>
	Cattle & Calves	Sheep & Lambs	Total Head	
Inventory	59,177	54,578	113,755	
	Land & Buildings	Machinery & Equipment	Combined Investment	
Market Value	\$925,096,000	\$51,373,000	\$976,469,000	
Average Per Farm	\$2,256,332	\$125,300	\$2,381,632	
Property Tax Paid	\$2,015,000			
Source: 2012 Census of Agriculture				
<b>Gross Revenue 2015</b>				
Cash Receipts - Livestock	\$31,217,000	73.1%		
Cash Receipts - Crops	\$4,707,000	11.0%		
Government Payments	\$740,000	1.7%		
Miscellaneous Income	\$6,018,000	14.1%		
<b>Total Gross Revenue</b>	<b>\$42,682,000</b>	<b>100.0%</b>		
Source: Bureau of Economic Analysis				
<b>Employment 2014</b>				
	Agriculture	County Total	Percent Agriculture	
Jobs	532	8,811	6.0%	
Labor Income	-\$220,000	\$484,783,000	N.A.	
Average Earnings/Job	-\$414	\$55,020	N.A.	
Source: Bureau of Economic Analysis				

**Table 22. Converse County Travel Industry, 2017**

<b>Visitor Spending</b>					
	Amount	Percent			
Accommodation	(Million\$)				
Hotel, Motel	\$15.9	34.5%			
Campground	\$22.2	48.2%			
Private Home	\$5.6	12.1%			
Vacation Home	\$1.6	3.5%			
Day Travel	\$0.8	1.7%			
<b>Total</b>	<b>\$46.1</b>	<b>100.0%</b>			
	Amount	Percent			
Purchases	(Million\$)				
Accommodations	\$8.1	17.6%			
Food Service	\$11.6	25.2%			
Food Stores	\$4.6	10.0%			
Local Tran. & Gas	\$6.2	13.4%			
Art, Ent. & Rec	\$8.9	19.3%			
Retail Sales	\$6.7	14.5%			
<b>Total</b>	<b>\$46.1</b>	<b>100.0%</b>			
<b>Employment</b>					
Sector	Jobs	Percent	Earnings (Million\$)	Percent	Ave. Earn Per Job
Accom & Food Service	280	50.9%	\$7.6	56.7%	\$27,143
Arts, Ent. & Rec.	140	25.5%	\$3.3	24.6%	\$23,571
Retail	110	20.0%	\$1.4	10.4%	\$12,727
Ground Tran	0	0.0%	\$0.1	0.7%	N.A.
Other Travel	20	3.6%	\$1.0	7.5%	\$50,000
<b>Total</b>	<b>550</b>	<b>100.0%</b>	<b>\$13.4</b>	<b>100.0%</b>	<b>\$24,364</b>
<b>Tax Revenue</b>					
	Amount	Percent			
	(Million\$)				
Local Tax Revenue	\$0.8	30.8%			
State Tax Revenue	\$1.8	69.2%			
<b>Total Revenue</b>	<b>\$2.6</b>	<b>100.0%</b>			
Source: Dean Runyan Associates					